



Brixton Water Lane, Brixton, SW2

3 bedroom flat to let

£650 Per Week

Furnished

Property Details

Keating Estates present this contemporary, luxurious three double bedroom flat. This development is engineered throughout for a sense of space, luxury and light through a fluid design which makes excellent use of the generous space that this flat offers. This new build flat comes complete with a private balcony and access to a stunning communal roof terrace. Set next to a charming conservation area, the development offers modernity and quality in a tranquil area a stone's throw from the heart of vibrant Brixton. Brockwell Park is only around a three minute walk away, and three stations are within easy reach.

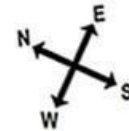
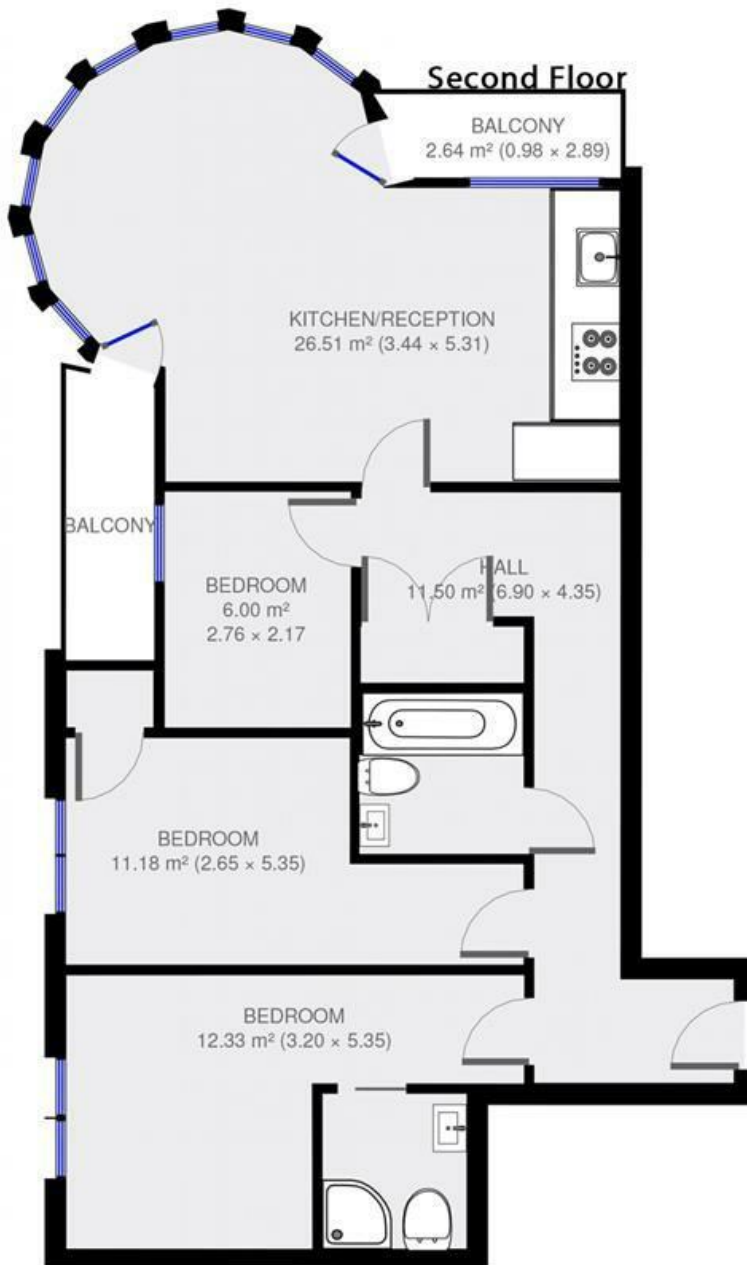
Features

- New build
- Modern development
- Communal Roof Terrace
- Balcony
- Three Bedrooms
- Two Bathrooms
- Close to Brockwell Park
- Close to Central Brixton

Council tax band D EPC rating B (84)



Brixton Water Lane



3 bed Flat.
Approx internal area:

819 sqft 76 sqm

While we do try our very best, floor plans are produced as a guide only and we take no responsibility for the precise accuracy with which any property is represented

Brixton Water Lane, Brixton, SW2

