

Brixton Hill Court, Brixton, SW2

1 bedroom flat - purpose built for sale

£300,000

Leasehold

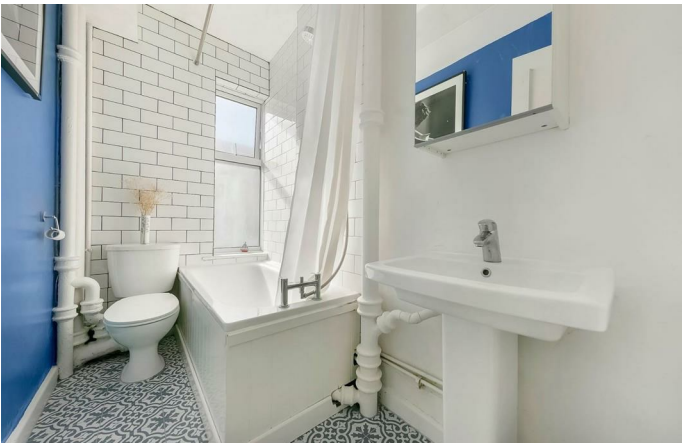
Property Details

Almost 500 square feet of internal space with high ceilings and tasteful, neutral décor throughout. The property comprises a beautiful reception room, providing the ideal spot to entertain guests, relax, unwind and dine. Adjacent, a contemporary bathroom with a stylish tile finish and a modern kitchen. This charming flat is completed by a well-sized bedroom offering plenty of space for storage options. The property also offers a large, well maintained shared garden as well as electric gates and a lift.

Features

- One bedroom
- Art Deco Building
- Bright and airy throughout
- Lift
- Communal garden
- Quiet area set back from the road
- Located a five-minute walk from Brixton tube station
- Victoria line
- Brockwell Park
- Chain-free

Council tax band C EPC rating C (71)

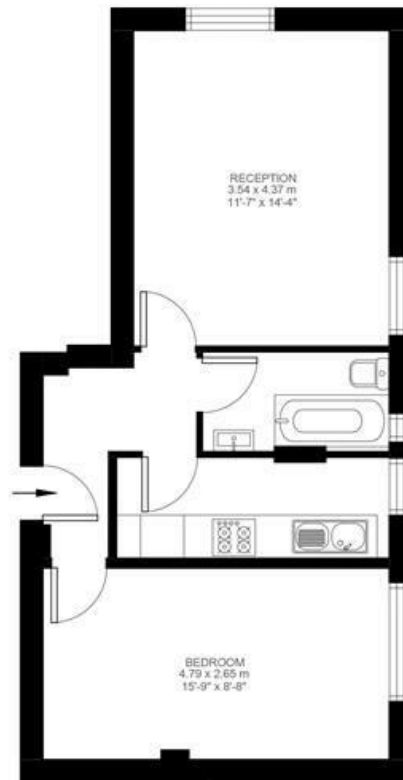


Brixton Hill Court, Brixton, SW2

Brixton Hill Court, Brixton, SW2

1 Bedroom Flat

Approximate internal area: **465 sqft 43 sqm**



Third Floor



While we do try our very best, floor plans are produced as a guide only and we take no responsibility for the precise accuracy with which any property is represented.

Brixton Hill Court, Brixton, SW2

