

**Thurlow Park Road, SE21**

1 bedroom flat to let

£380 Per Week

Unfurnished

Property Details

A spacious one double bedroom flat in a fantastic location, in the heart of popular Tulse Hill. Thurlow Park Road is conveniently located a short walk from the green open spaces of Brockwell Park, lauded as London's best outdoor space by locals with its amazing lido among its myriad attractions. Tulse Hill train station is within a two-minute stroll with trains to London Bridge and central London via Southern Rail and the Thames Link. Herne Hill and West Dulwich are also within easy walking reach offering a village feel and a wide range of amenities. Brixton is a five-minute bus journey or a twenty-five minute walk across Brockwell Park. The property comprises a spacious separate reception with wood flooring throughout, the kitchen is fully fitted and offers plenty of cupboard and storage space. The double bedroom is of good size and the contemporary bathroom completes the property.

Council tax band B EPC rating D (59)

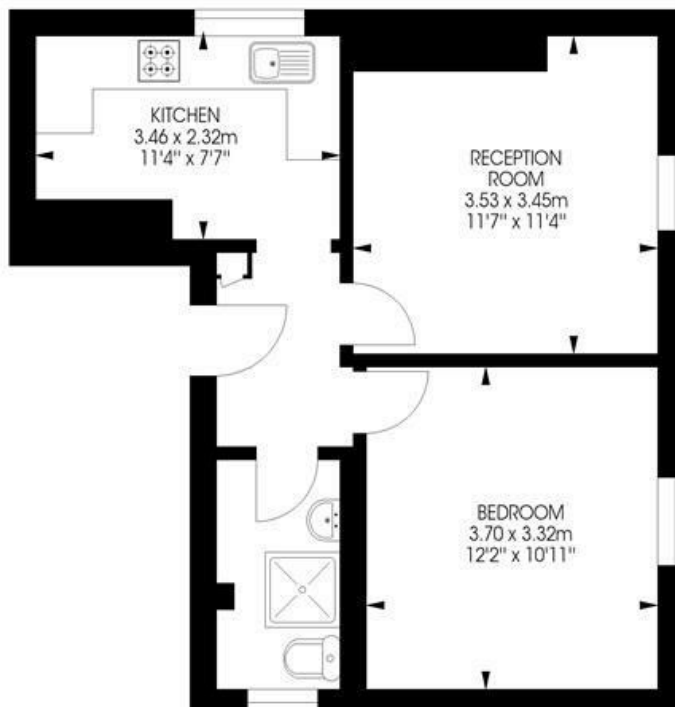
Features



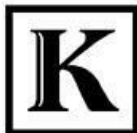
Thurlow Park Road, SE21

Thurlow Park Road,
Tulse Hill, SE21
1 bedroom flat

Approximate internal area: **449 sqft / 41.7 sqm**



First Floor



While we try our very best, floor plans are produced as a guide only and we take no responsibility for the precise accuracy with which any property is represented.

Thurlow Park Road, SE21

