

Railton Road, Brixton, SE24

2 bedroom flat to let

£430 Per Week

Furnished

Property Details

Keating Estates are proud to present this spacious split level two double bedroom flat located a short walk from the famous greenery of Brockwell Park. On the first floor, you will find the modern kitchen filled with plenty of storage, and the spacious bright and airy reception room filled with natural daylight flooding through large windows. Upstairs there are two double bedrooms and a sleek modern family size bathroom. Living here you'll be less than a nine minute walk to Brockwell park and you'll also be just around two minute walk from Herne Hill station.

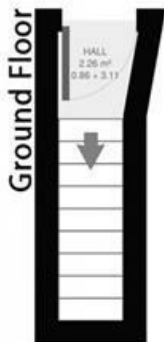
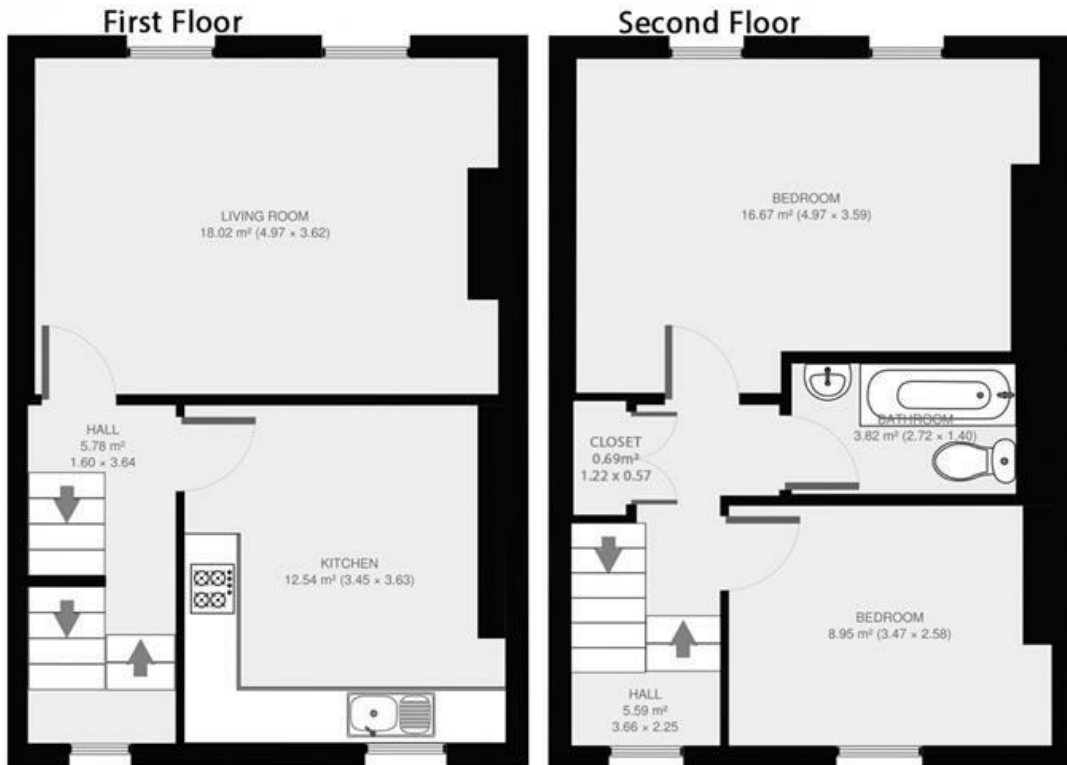
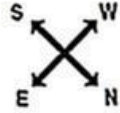
Features

- Split-level
- Victorian conversion
- Less than a 9 minute walk to Brockwell park
- 2 Bedrooms
- Separate reception and kitchen
- Bright and airy
- Around a 2 minute walk to Herne Hill station

Council tax band C EPC rating D (65)



Railton Road



2 Bed Flat.
Approx internal area:

862 sqft 80 sqm

While we do try our very best, floor plans are produced as a guide only and we take no responsibility for the precise accuracy with which any property is represented

Railton Road, Brixton, SE24

