



**Hinton Road, London, SE24**

2 bedroom flat - purpose built to let

**£484 Per Week**

Part furnished

## Property Details

Keating Estates are proud to present this wonderful bright and airy two double bedroom, top floor, two bathroom flat situated around a four minute walk to Loughborough Junction station. This beautiful flat is generously proportioned & comprises two bedrooms, two bathrooms - one of which has an en-suite, a separate kitchen, a homely living area with heaps of natural light due to the large doors, gated (allocated) parking and a large communal roof terrace with panoramic views of London. Living here you'll also be within easy walking distance to Brixton underground station and just 10 minutes from Brixton Village with all that Brixton has to offer in terms of chained and independent, shops, bars and restaurants - making this ideal for two professional sharers.

## Features

- Two double bedrooms
- Two bathrooms
- Purpose built flat
- Separate Kitchen
- Large communal roof terrace
- Allocated, secure parking
- Walking distance into Brixton

Council tax band D    EPC rating C (76)



## Hinton Road

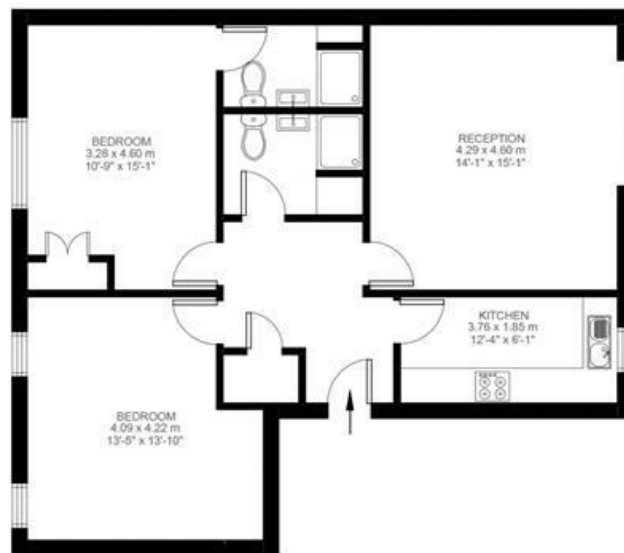
# K

### 2 Bedroom Flat

Approx internal area:

**829 sqft 77 sqm**

While we do try our very best, floor plans are produced as a guide only and we take no responsibility for the precise accuracy with which any property is represented



Second Floor



Hinton Road, London, SE24

