



**Crawthow Grove, East Dulwich, SE22**

2 bedroom flat to let

**£470 Per Week**

Part furnished

## Property Details

Presenting this modern, sleek two bedroom flat. The flat offers two double bedrooms, a large open plan kitchen/reception and a phenomenal roof terrace with fantastic views. The flat is very modern and recently refurbished to a high standard. Lordship Lane has a lot to offer, with a plethora of restaurants, pubs, cafes and shops.

## Features

- Roof terrace
- Bright and airy throughout
- 2 bedrooms
- Around a 7 minute walk to East Dulwich station
- Open plan kitchen/reception
- Around a 10 minute walk to Peckham Rye

Council tax band C    EPC rating C (79)







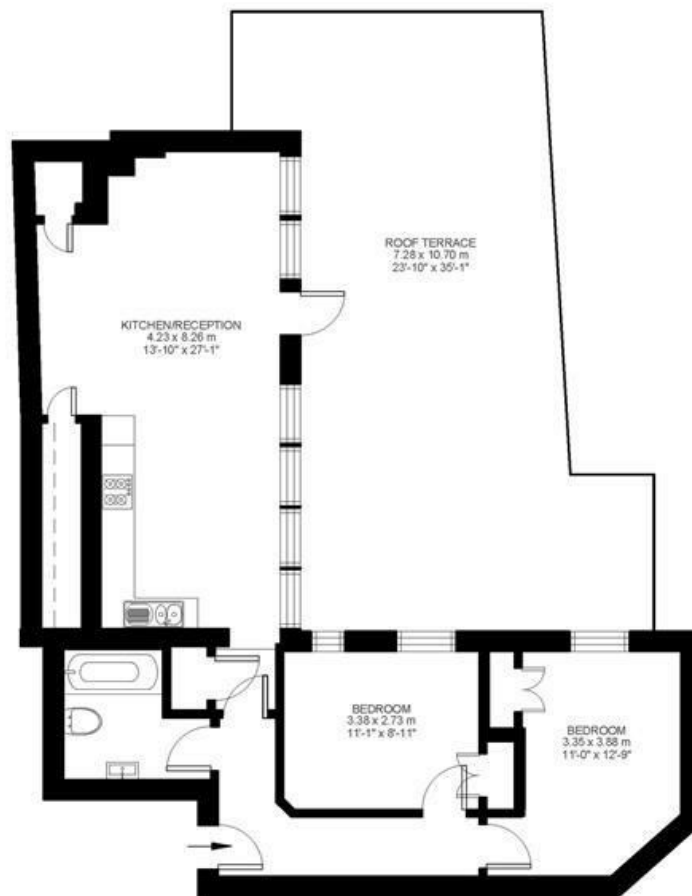
## Crawthew Grove

2 Bed flat

Approx internal area:

**781 sqft 73 sqm**

While we do try our very best, floor plans are produced as a guide only and we take no responsibility for the precise accuracy with which any property is represented



Second Floor





Crawthow Grove, East Dulwich, SE22

