



**Brading Road, SW2**

2 bedroom flat to let

**£460 Per Week**

Part furnished

## Property Details

Keating estates are proud to present this stunning two bedroom garden flat situated around just a nine minute walk away from Brockwell park. This spacious flat comprises two generously sized double bedrooms, a modern family sized bathroom, an open plan kitchen and reception area that has doors going out onto the private garden which is ideal for entertaining guests whilst also allowing heaps of natural light into this beautiful property. This property is ideal for two professional sharers looking to enjoy the more relaxed atmosphere that Herne Hill has to offer whilst being a stone's throw away from vibrant Brixton.

## Features

- Private Garden
- Open plan kitchen/reception
- Two bedrooms
- Around a 9 minute walk to Brockwell park
- Around a 20 minute walk to Brixton tube
- Around a 20 minute walk to Herne hill station
- Bright and airy

Council tax band C      EPC rating D (65)





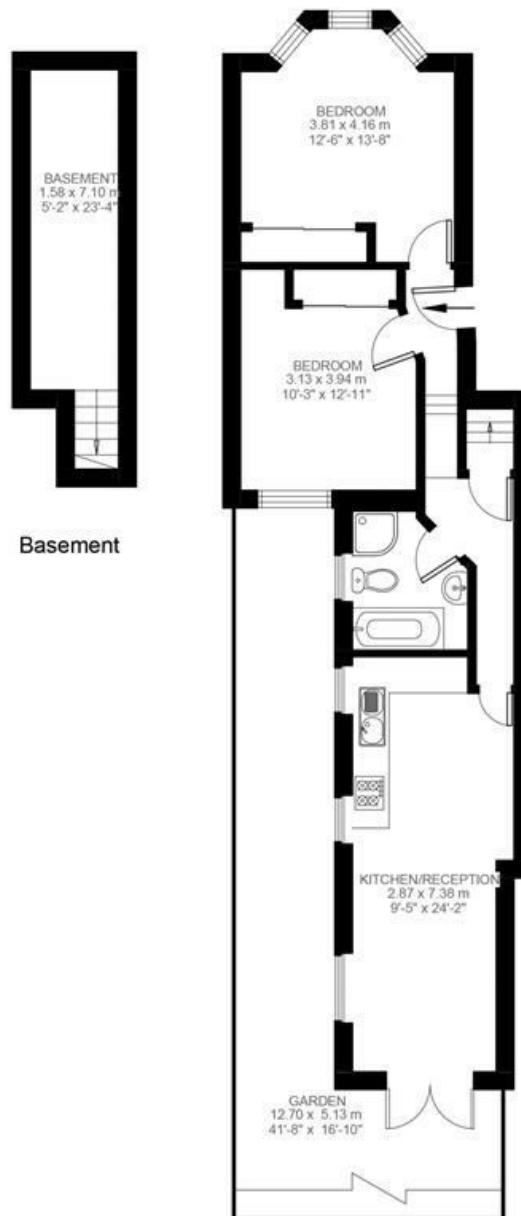
# Brading Road

## 2 Bedroom Flat

Approx internal area:

**767 sqft 71 sqm**

While we do try our very best, floor plans are produced as a guide only and we take no responsibility for the precise accuracy with which any property is represented



Basement

Ground Floor



Brading Road, SW2

