



Brixton Road, Brixton, SW9

2 bedroom flat - conversion for sale

£599,950

Share of Freehold

Property Details

An enviable two double bedroom, split-level, garden flat in a beautiful period townhouse with easy reach of Brixton and Stockwell. Set back quietly from the road, the home is packed with character with a restored wooden staircase upon entrance. Grand and expansive the open plan reception is ideal for entertaining. Unwind in front of a cast iron original fireplace, enjoy meals in the generous dining area or cook in the shaker style kitchen. A utility in the hall keeps the laundry quietly separate. Upstairs, both bedrooms are doubles, boasting elegant arched windows adding unique charm to these striking rooms which enjoy a peaceful setting atop the house. Currently a home office, the principal bedroom has built-in wardrobes for an easy transition back into a bedroom. Conditional permission has been previously granted for the erection of a single storey rear extension. The private garden has a large shed or bike store and space for multiple seating areas. This outdoor retreat is set in a favourable position for capturing more sunlight.

Council tax band D EPC rating E (45)

Features

- Two double bedrooms
- Large private garden
- Victorian conversion
- Split over two floors
- Beautifully presented throughout
- Potential to extend STNP
- Local amenities of Brixton Road
- Brixton a twelve-minute stroll
- Victoria and Northern Lines
- Share of freehold

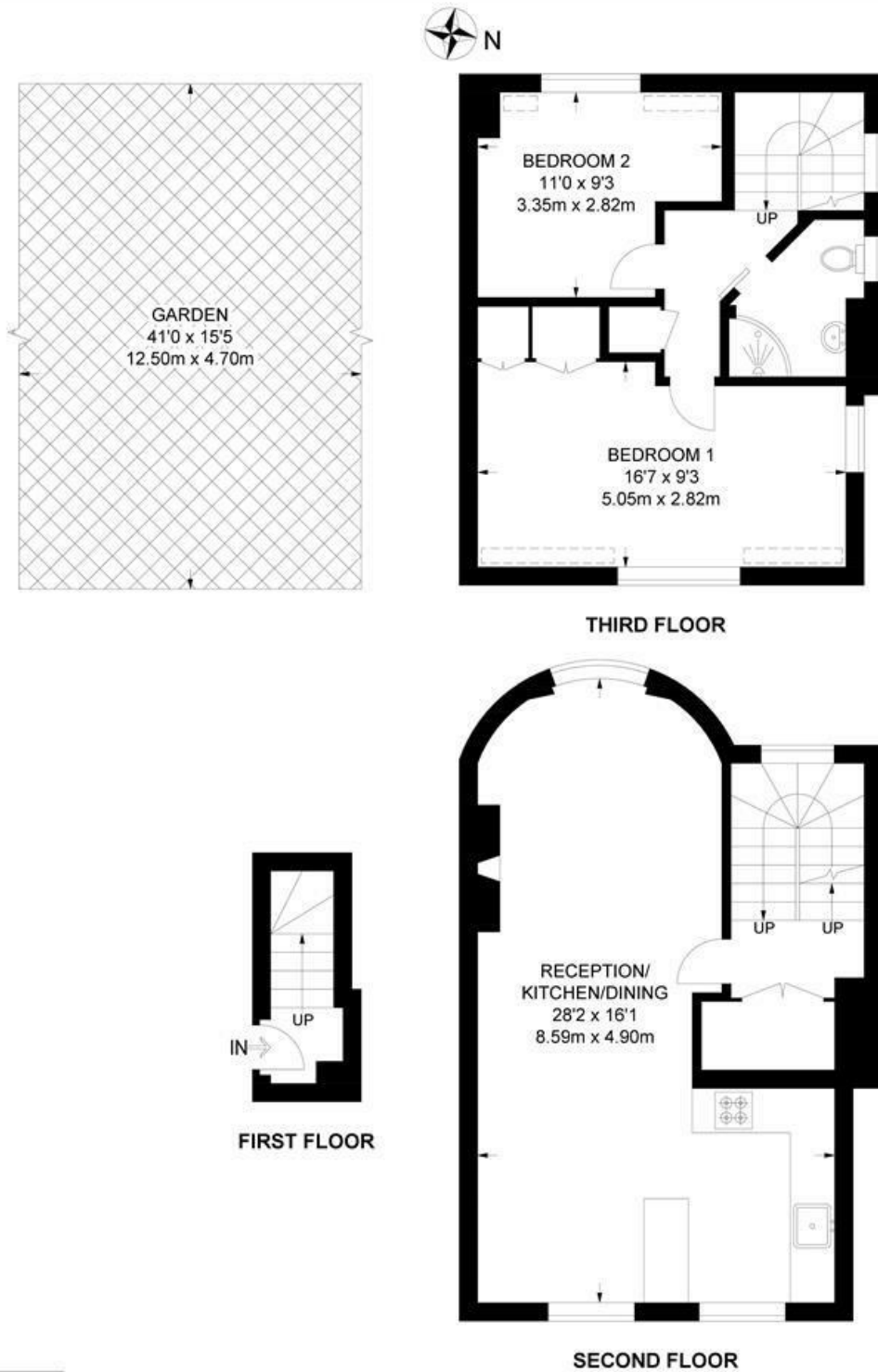




Brixton Road, Brixton, SW9

Brixton Road, SW9
2 Bedroom Flat

APPROXIMATE GROSS INTERNAL AREA: **835 SQ FT / 77.6 SQ M**



While we try our very best, floor plans are produced as a guide only and we take no responsibility for the precise accuracy with which any property is represented.

Brixton Road, Brixton, SW9

