

Horseshoe Mews, SW2

2 bedroom flat - purpose built to let

£450 Per Week

Furnished

Property Details

A fantastic two double bedroom, purpose built flat, tucked away securely on the top floor, set within a quiet mews off Acre Lane. This charming property was built with modern living in mind and offers a large open-plan living space and two well-proportioned bedrooms.

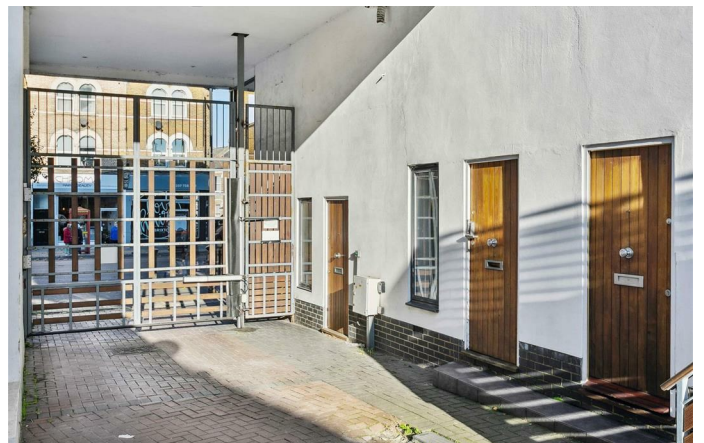
The master bedroom is considerably large offering plenty of storage, the second bedroom is also a good size double. The living area is a brilliant spot to relax and unwind or entertain guests, also large floor to ceiling windows providing the room with an abundance of natural light. The open-plan layout makes the most of the square footage on offer, rather than wasting extra space on unnecessary hallways. A modern kitchen, with integrated appliances and a sleek finish occupies one side of the room, whilst the other side is a cosy living area, with enough room to dine. The flat is completed by a smart, modern bathroom. The property comes has off-road parking on a first come first serve basis.

The property is a short five-minute stroll down Acre Lane to the centre of Brixton, and first stop on the Victoria Line (arguably London's favourite Underground Line, being an 11 minute journey to Oxford Circus). Close by, vibrant Brixton Hill and its brilliant array of cafes, pubs and restaurants, such as The Naughty Piglets, Maremma, F Mondays, Pizza Brixton, and the White Horse pub, to name a few. The extremely popular Brixton Village and POP Brixton also offer countless options for cuisine and the lush,

Features

- Two double bedrooms
- Secure purpose-built flat
- Modern
- Bright and airy atmosphere throughout
- Victoria and Northern lines in easy reach
- Ideal location minutes from all the action
- Within short walking distance to Brockwell Park

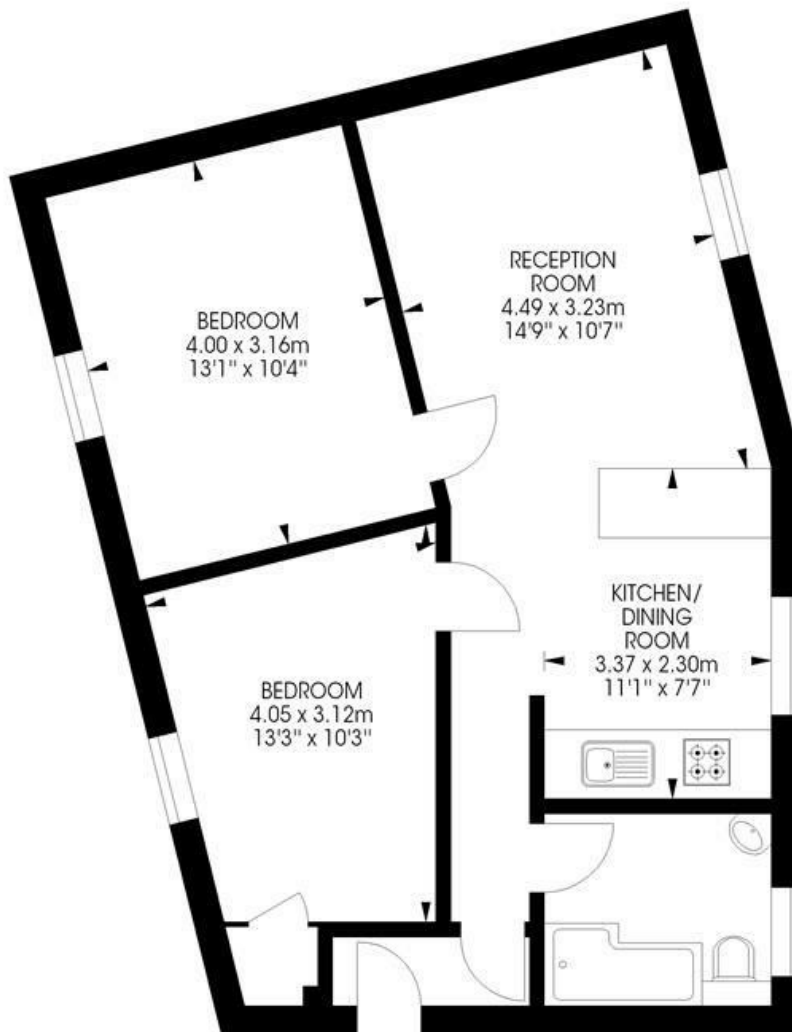
Council tax band D EPC rating C (78)



Horseshoe Mews, SW2
2 bedroom flat

Approximate internal area:

606 sqft / 56.30 sqm



Third Floor



While we try our very best, floor plans are produced as a guide only and we take no responsibility for the precise accuracy with which any property is represented.

Horseshoe Mews, SW2

