



**Lynette Avenue, Clapham, SW4**

2 bedroom flat to let

**£495 Per Week**

Furnished

## Property Details

Keating Estates presents this spacious two double bedroom split level garden flat to the lettings market. The property is beautifully presented, offering a large reception room, dining room and a fully equipped integrated kitchen, two double bedrooms and a modern family size bathroom. You'll have the advantage of relaxing in a private garden, perfect for entertaining friends and family, which can be accessed through doors in the living room, kitchen and 1 of the bedrooms. The property is located in a sought after area offering a selection of shops, bars, restaurants and local amenities including branded super markets. Clapham south is your nearest tube station which gives you access to northern line straight into the city - ideal for two professional sharers.

## Features

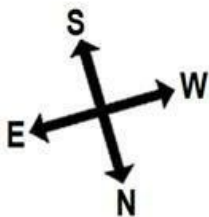
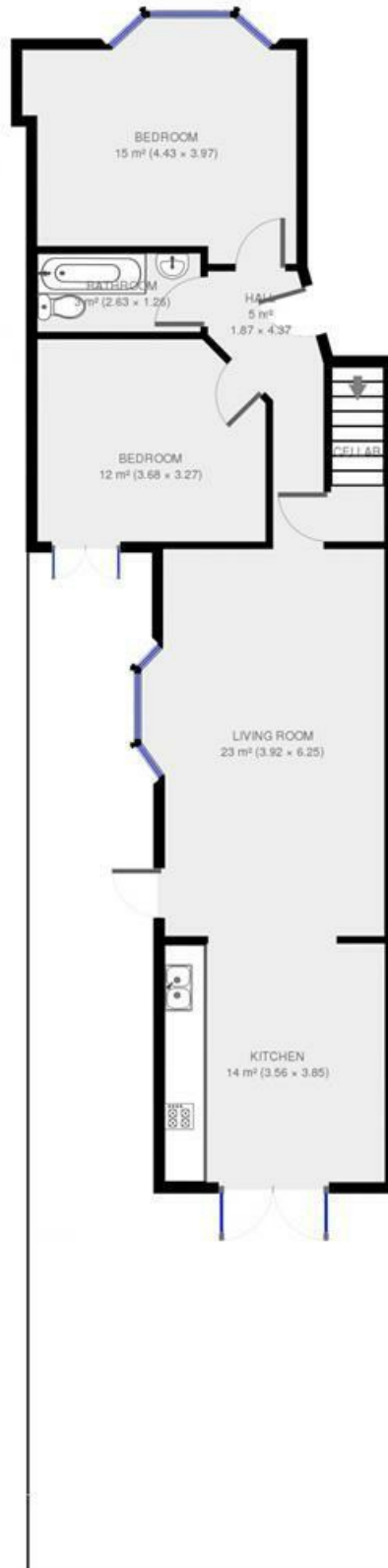
- Private garden
- Victorian
- Two bedrooms
- Spacious reception
- Located seconds from Abbeville Village
- Bright And Airy Throughout
- Close To Clapham South station

Council tax band D      EPC rating D (64)



Lynette Avenue, Clapham, SW4

## Lynette Avenue



2 bed flat.

Approx internal area:

797 sqft 74 sqm

While we do try our very best, floor plans are produced as a guide only and we take no responsibility for the precise accuracy with which any property is represented

Lynette Avenue, Clapham, SW4

