

## Holmewood Gardens, Brixton, SW2

4 bedroom house for sale

£965,000

Freehold

### Property Details

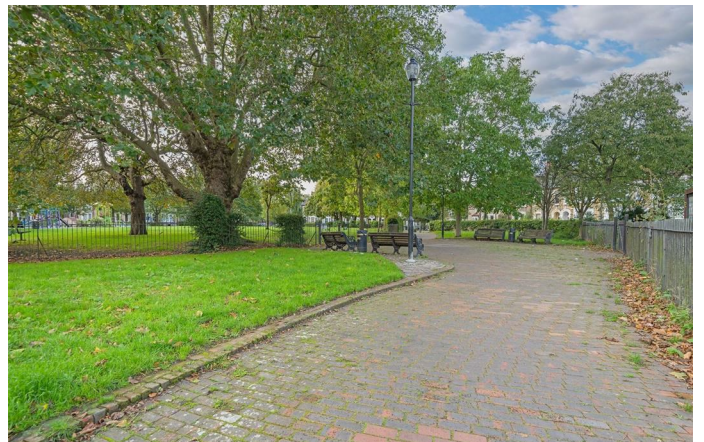
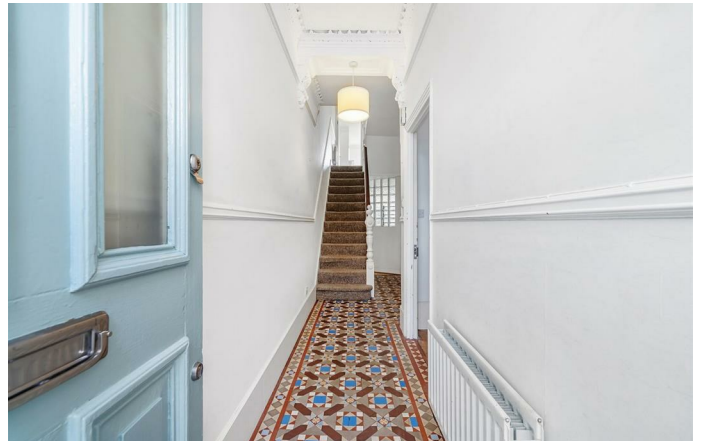
A characterful four bedroom Victorian house on the highly sought-after Holmewood Gardens, overlooking a beautiful garden square. The home is brimming with original features. The double reception is the heart of the home with leafy views front and rear. The kitchen is a bright and welcoming space in which to cook and dine with views of the charming fireplace and garden. French doors flow seamlessly into the private garden, laid to patio and lawn ideal for escaping the bustle of the city. Upstairs, four comfortable double bedrooms are split over the first and second floor, all with fireplaces and charm. The principal spans the width of the house with a large bay window framing views across the garden square opposite. The further three double bedrooms are all nestled to the rear with garden views. Two family bathrooms facilitate the home. There is also access to a vast loft space and cellar. All in all a fantastic blank canvas with a new boiler last year plus an abundance of preserved Victorian charm and surrounded by greenery, ready to move into with the potential to add your own mark, either decoratively or via kitchen and loft extensions.

### Features

- Four double bedrooms
- Private garden
- Victorian freehold house
- Leafy setting overlooking sought-after neighbourly square
- Potential to extend STNP
- Local shops, cafes and pubs on the doorstep
- Fifteen-minute walk to Brixton
- Nine-minute walk to Streatham Hill
- Excellent variety of transport links
- Chain-free

Council tax band F    EPC rating D (56)





Holmewood Gardens, Brixton, SW2

**Holmewood Gardens, SW2**  
**4 Bedroom House**

APPROXIMATE GROSS INTERNAL AREA WITH CELLAR: **1670 SQ FT / 155.1 SQ M**

APPROXIMATE GROSS INTERNAL AREA WITHOUT CELLAR: **1565 SQ FT / 145.4 SQ M**



While we try our very best, floor plans are produced as a guide only and we take no responsibility for the precise accuracy with which any property is represented.

Holmewood Gardens, Brixton, SW2

