



Craster Road, Brixton, SW2

1 bedroom flat - conversion for sale

£375,000

Share of Freehold

Property Details

A lofty one double bedroom split-level Victorian flat. This unique property offers generous internal space, split over two floors for a homely feel that is sunny and not overlooked. A bright and airy open plan reception boasts characterful lofty ceilings creating a cavernous feel with cosy nooks. The kitchen is stylish with fluted wooden cabinetry offering ample storage, with black tiles and surfaces to finish, reflected in the floor tiles tastefully dispersed between the floorboards. Completing the upper floor, a versatile study can be repurposed to suit the needs of the purchaser, including as a meditation space, dressing room, games room or reading corner. Downstairs the double bedroom boasts generous built-in storage space, a peaceful and neutrally decorated room. Adjacent, the bathroom is styled in natural tones and offers storage, a heated towel rail and an inviting double-ended bath with rain shower overhead. With a versatile layout, homely and private feel, large square footage over two floors and characterful features this appealing flat will make an excellent first time purchase or pied a terre.

Council tax band C EPC rating D (65)

Features

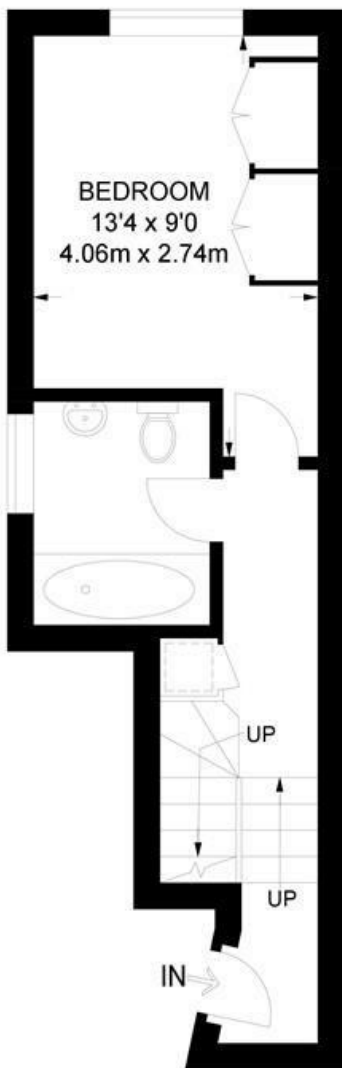
- One double bedroom
- Study
- Victorian conversion
- 630 square feet of internal space
- Split over two floors
- Walking distance to Brixton and Herne Hill
- Brockwell Park a short stroll away
- Local pub, bakery and amenities on doorstep
- Share of freehold
- Chain-free



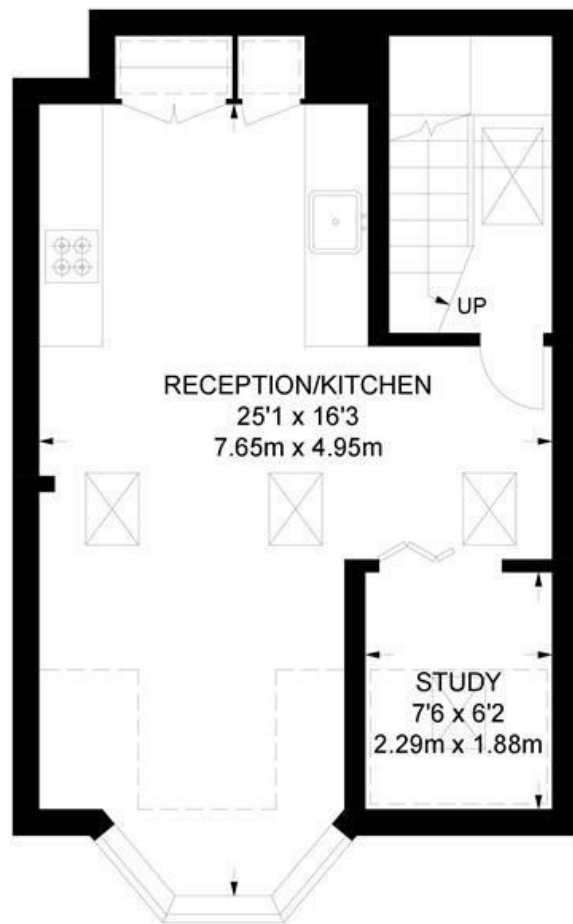
Craster Road, Brixton, SW2

Craster Road, SW2
1 Bedroom Flat

APPROXIMATE GROSS INTERNAL AREA: **630 SQ FT / 58.5 SQ M**



FIRST FLOOR



SECOND FLOOR



While we try our very best, floor plans are produced as a guide only and we take no responsibility for the precise accuracy with which any property is represented.

Craster Road, Brixton, SW2

