

Brixton Hill, Brixton, SW2

1 bedroom flat - purpose built for sale

£285,000

Leasehold

Property Details

A well-presented one bedroom flat, in a well-maintained, popular art deco style building with a communal garden. Set in a prime location, moments from the heart of Brixton and the Victoria line. This particular apartment is quietly to the side of the building, overlooking a sleepy one-way street, perfect for those looking to be close to the action whilst maintaining a sense of calm. The internal space has been considerably configured with minimal hallways, maximising the square footage on offer. The bright and airy open-plan reception has large windows and a neutral finish with room to relax and dine, plus space for a desk. The kitchen offers ample storage with light features adding to the homely warmth. The bedroom is a well-proportioned double with leafy views and generous space for multiple storage options. A contemporary bathroom leads off the bedroom. There is also generous storage in the entrance hall. Further benefits include a communal garden, lift and, subject to availability, storage units available for rent.

Council tax band B EPC rating C (72)

Features

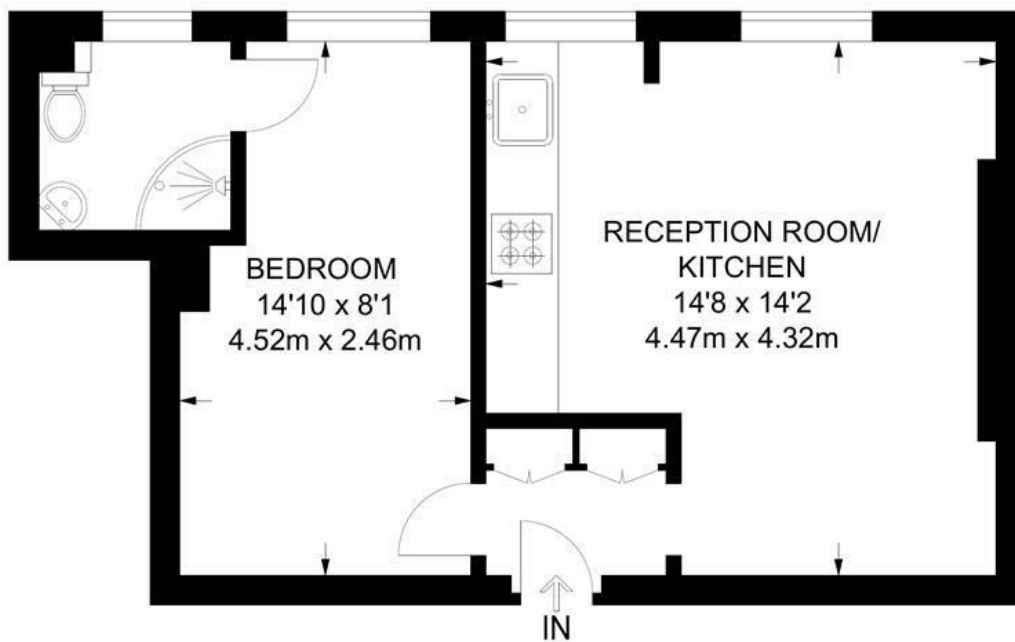
- One double bedroom
- Art deco style purpose-built
- Bright and airy
- Communal garden & lift
- Quiet position within the building
- Ideal location moments from central Brixton
- Minutes from the Victoria line
- Well serviced bus routes
- Brockwell Park in easy reach
- Chain-free



Brixton Hill, Brixton, SW2

Effra Court, SW2
1 Bedroom Flat

APPROXIMATE GROSS INTERNAL AREA: **357 SQ FT / 33.2 SQ M**



THIRD FLOOR

Brixton Hill, Brixton, SW2

