

Herne Hill, Herne Hill, SE24

2 bedroom flat - conversion for sale

£525,000

Leasehold

Property Details

A generously sized two double bedroom flat, perfectly located on a leafy residential road, close to the centre of Herne Hill. This lovely apartment occupies the top floor of a converted grand Victorian town house. The flat is not only spacious but also lit with plenty of natural light throughout, thanks to large windows in every room. The two bedrooms are both genuine double rooms and the property will appeal to a wide range of prospective purchasers. The kitchen is modern with pretty views over the neighbouring gardens and rooftops, supported by a separate reception room that feels airy and spacious with a large dormer window. The property boasts high ceilings throughout and the layout truly makes the most of the generous square footage of the property. This flat is ready to move into hassle-free and also has the benefit of direct access to substantial demised loft space. The property already boasts over 900 square feet of internal floor space and with the additional potential of extending into the loft, the new owners have the opportunity to create an even grander space, subject to the necessary permissions.

Features

- Two double bedrooms
- Bright and airy throughout
- Over 900 square feet of well used internal space
- Substantial demised loft space
- Development potential
- Quiet and residential yet central location
- Views over Brockwell Park, entrance within minutes
- Short walk to central Herne Hill
- Chain-free

Council tax band D EPC rating D (68)



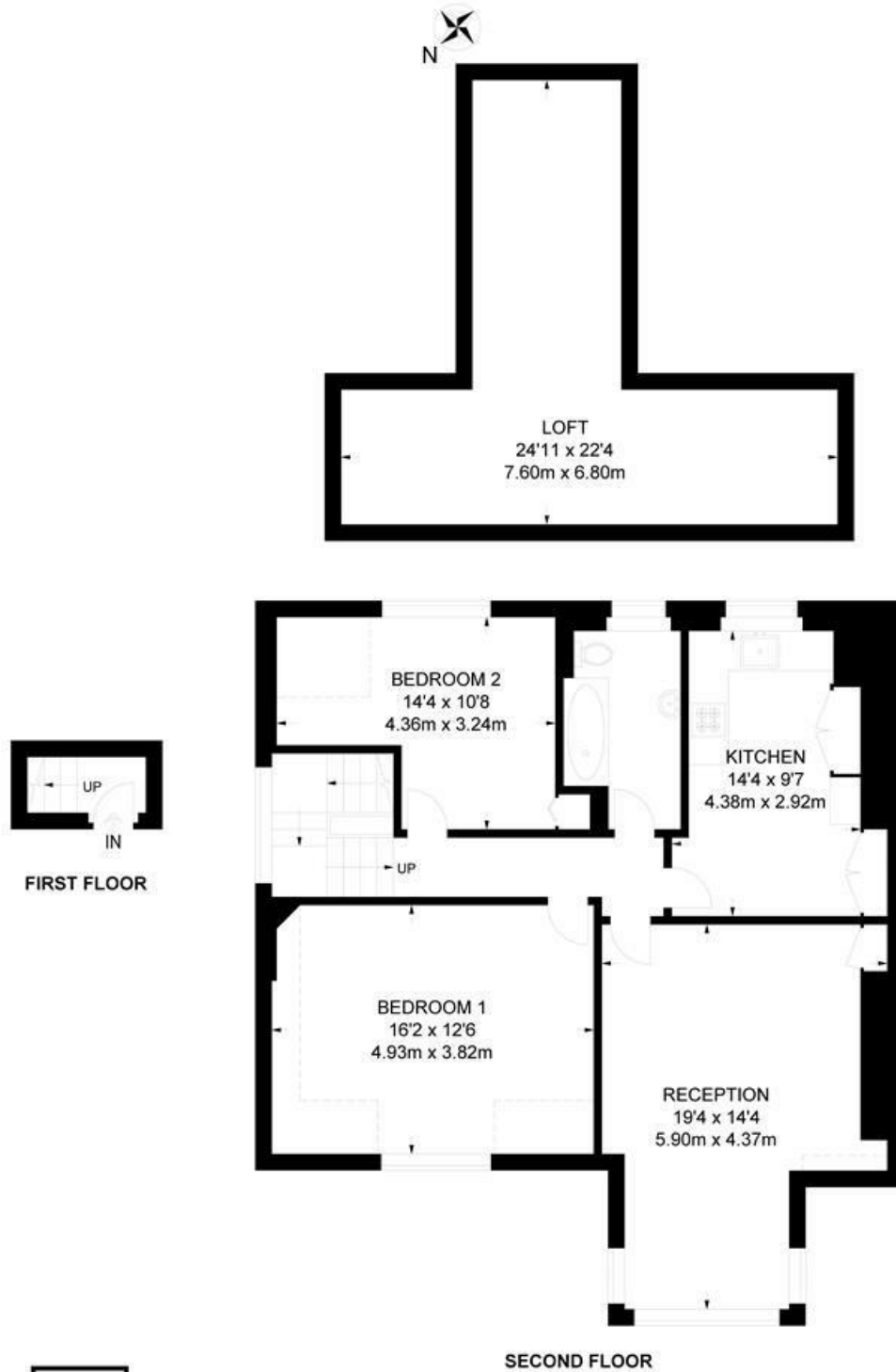


Herne Hill, Herne Hill, SE24

Herne Hill, SE24
2 Bedroom Flat

APPROXIMATE GROSS INTERNAL AREA WITH LOFT: 1471 SQ FT / 136.7 SQ M

APPROXIMATE GROSS INTERNAL AREA WITHOUT LOFT: 915 SQ FT / 85 SQ M



While we try our very best, floor plans are produced as a guide only and we take no responsibility for the precise accuracy with which any property is represented.

Herne Hill, Herne Hill, SE24

