



**Milton Road, Herne Hill, SE24**

2 bedroom flat to let

**£450 Per Week**

Unfurnished

## Property Details

A stunning two double bedroom garden flat located in the ever popular Herne Hill. This property comprises a large reception room, bathroom, a separate modern kitchen, and a beautifully cultivated garden. This property is well located in the popular poets pocket corner in Herne Hill just a stones throw from the green and open spaces of Brockwell Park. You'll also be around a six minute walk from Herne Hill station and about a fourteen minute walk from Brixton underground station.

## Features

- Shared garden
- 2 bedrooms
- Separate Kitchen
- Large reception
- Around a 6 minute walk from Herne Hill
- around a 14 minute walk from Brixton underground station
- Bright and airy throughout

Council tax band C    EPC rating D (68)



# Milton Road

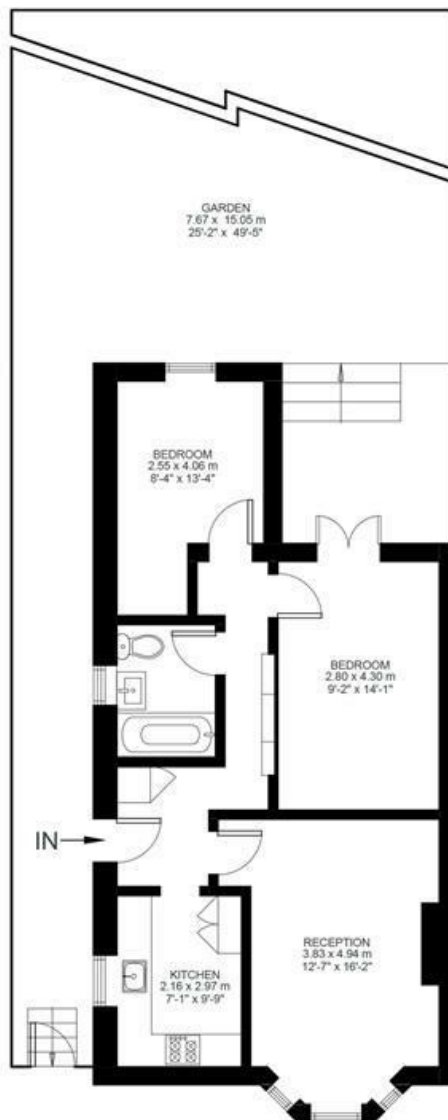
# K

## 2 Bed flat

Approx internal area:

**630 sqft 58 sqm**

While we do try our very best, floor plans are produced as a guide only and we take no responsibility for the precise accuracy with which any property is represented



Lower Ground Floor

Milton Road, Herne Hill, SE24

