



Strathleven Road, Brixton, SW2

5 bedroom house for sale

£1,250,000

Freehold

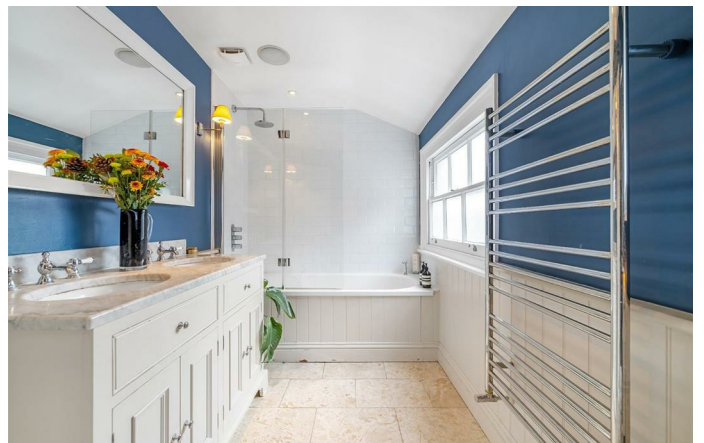
Property Details

An impressive five double bedroom Victorian home on an attractive residential street within the LTN and the catchment areas for Ofsted Outstanding schools. Fully extended, this beautiful home strikes a balance of period features and modern finishes to create an appealing ambience. The ground floor comprises a dual-aspect reception, running through into a splendid rear dine-in kitchen plus a convenient downstairs W.C. The double reception displays period character and polished wood floors creating a beautiful flow to the ground floor whilst bouncing natural light from front and rear. Sleek and contemporary the kitchen is large with built-in speakers, an island and space for a table, providing the ideal family or entertainment hub. Bi-fold doors transition into to the well-nurtured private garden. Fauna and flora create a leafy border to a low-maintenance decked area. Over the upper floors are five double bedrooms, the principal spanning the width of the house, boasting an attractive bay window. Two tastefully decorated bathrooms service the bedrooms and there is access to the eaves for storage.

Features

- Five double bedrooms
- Two bathrooms plus downstairs W.C.
- Victorian freehold house
- Private garden
- Well-presented throughout
- Local amenities and eateries on the doorstep
- Sudbourne and Corpus Christi catchment area
- Equidistant between Clapham North & Brixton Stations for the Northern and Victoria Lines

Council tax band E EPC rating D (60)





Strathleven Road, Brixton, SW2

Strathleven Road, SW2
5 Bedroom House

APPROXIMATE GROSS INTERNAL AREA: 1701 SQ FT / 158 SQ M



While we try our very best, floor plans are produced as a guide only and we take no responsibility for the precise accuracy with which any property is represented.

Strathleven Road, Brixton, SW2

