**Barnwell Road, Brixton, SW2**

2 bedroom flat to let

£461 Per Week

Furnished

Property Details

Keating estates are pleased to present this stunning two double bedroom split level garden flat located on an extremely popular road between Brixton and Herne Hill. You'll be around an eleven minute walk to Brixton tube station and only a five minute walk from Brockwell park and all the amenities that Herne Hill has to offer. The open plan reception is a good size which is flooded with natural light as you also have private courtyard garden to enjoy. The kitchen is contemporary with ample room for a dining table, the two bedrooms are similar in size, both comfortable double rooms, and located on different floors and the two modern and bright bathrooms really do finish off this beautiful property.

Council tax band D EPC rating C (76)

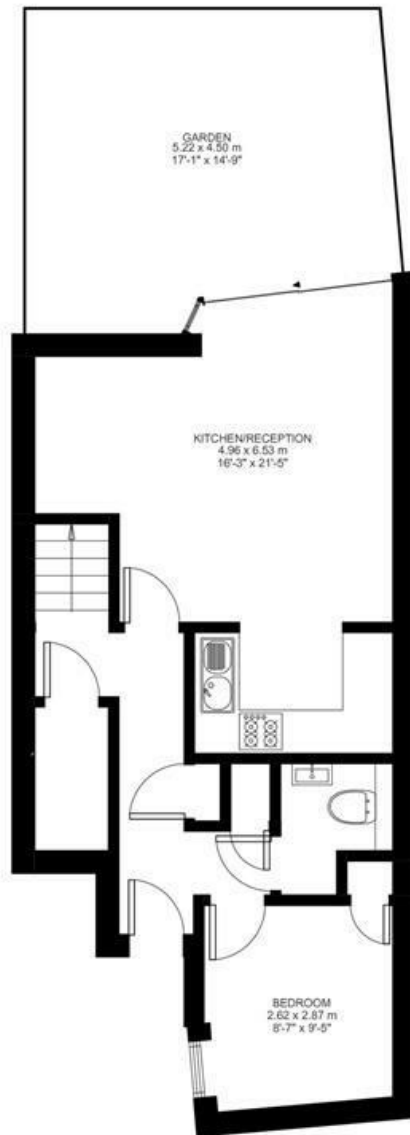
Features

- Private garden
- Stylish split level flat
- Bright and airy throughout
- Around an 11 minute walk to Brixton underground
- Around a 5 minute walk to Brockwell park
- Two bedrooms

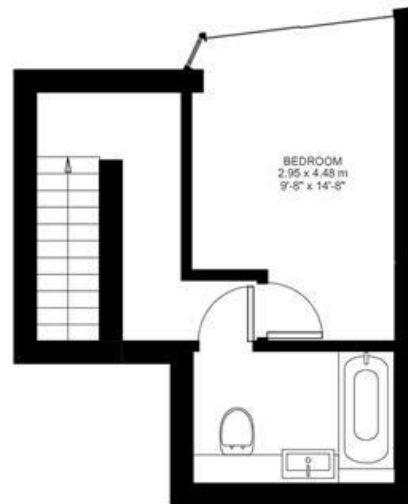




Barnwell Road



Ground Floor



First Floor



2 Bed flat
Approx internal area:

774 sqft 72 sqm

While we do try our very best, floor plans are produced as a guide only and we take no responsibility for the precise accuracy with which any property is represented

Barnwell Road, Brixton, SW2

