

Ashmere Grove, Brixton, SW2

2 bedroom flat to let

£450 Per Week

Part furnished

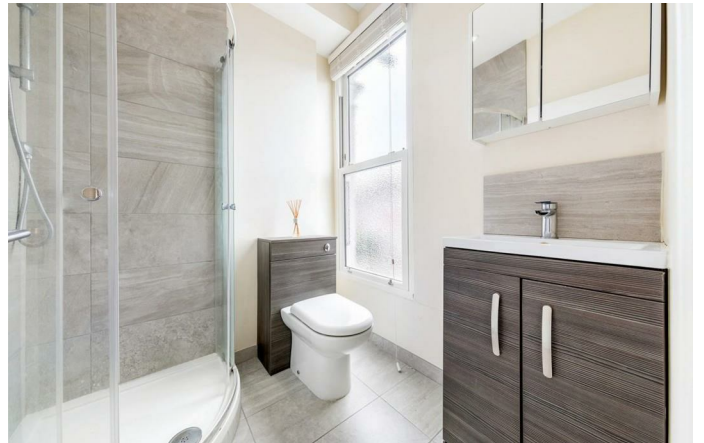
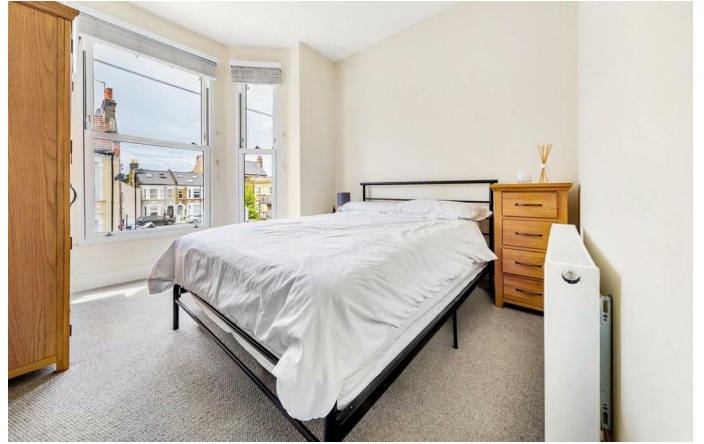
Property Details

A wonderful two double bedroom, two bathroom first floor flat located on a sought after road between Clapham and Brixton. The flat comprises a separate kitchen, good sized reception room with plenty of space for a dining area, two spacious double bedrooms one having an en-suite bathroom and a modern family bathroom. Ashmere Road is located within walking distance of both the Victoria line and Northern line, being close to both Brixton and Clapham which have an array of choice when it comes to pubs bars shops and restaurants such as the Duke of Edinburgh, Prince of Wales and The Belleview. The property is also within walking distance of Clapham Common which holds many different events throughout the summer months, There are many things to do within the area so you'll never be short of choice.

Features

- Two bedrooms
- Light and airy
- Bright and airy
- Close to central Brixton
- Furnished
- Good transport links
- En-suite bathroom

Council tax band C EPC rating C (79)





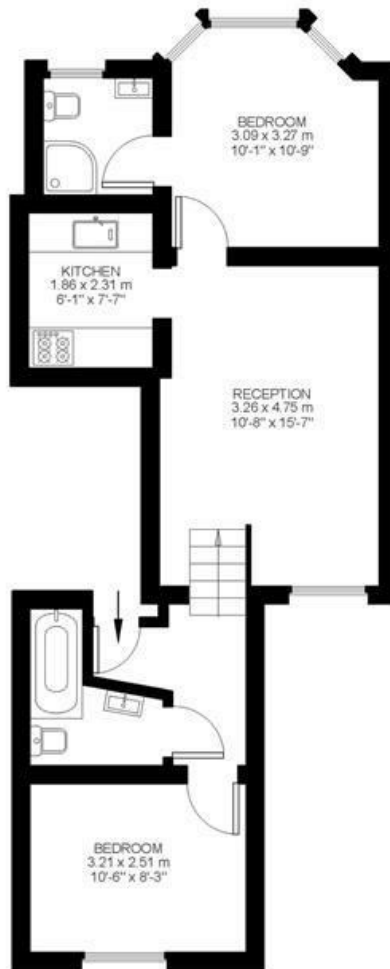
Ashmere Grove

2 Bed flat

Approx internal area:

550 sqft 51 sqm

While we do try our very best, floor plans are produced as a guide only and we take no responsibility for the precise accuracy with which any property is represented



First Floor



Ashmere Grove, Brixton, SW2

