



Hayter Road, Brixton, SW2

2 bedroom flat to let

£484 Per Week

Furnished

Property Details

Keating Estates are proud to present to market a beautifully presented, two double bedroom garden flat securely nestled on the top floor of this Victorian property, perfectly positioned on Hayter Road, a sleepy residential road close to the action of both Brixton and Clapham.

The separate reception room is characterful, with original wooden floorboards, feature fireplace and has an abundance of natural light thanks to the large windows and provides ample space in which to relax. The kitchen is integrated finished with wooden worktops providing everything you need in terms of practicality. The two double bedrooms are both generous doubles, located away from the social spaces – this separation provides a peaceful setting. The bedrooms are well-proportioned, which is a rarity for period conversions, the marginally larger of the two is set on the top floor has cosy carpets and the second bedroom, still a genuine double, has original wooden floors and is ideal as a comfortable double bedroom, or as a home office and guest room and last but not least the stunning garden is low-maintenance and this tranquil sun-trap will be the perfect escape from city life.

This flat has the huge benefit of being located on Hayter Road, within a sought-after residential pocket of streets tucked away off Brixton Hill between Brixton and Clapham. Situated close to the vibrant heart of Brixton, a seven-minute stroll from first stop on the Victoria Line at the tube with the

Features

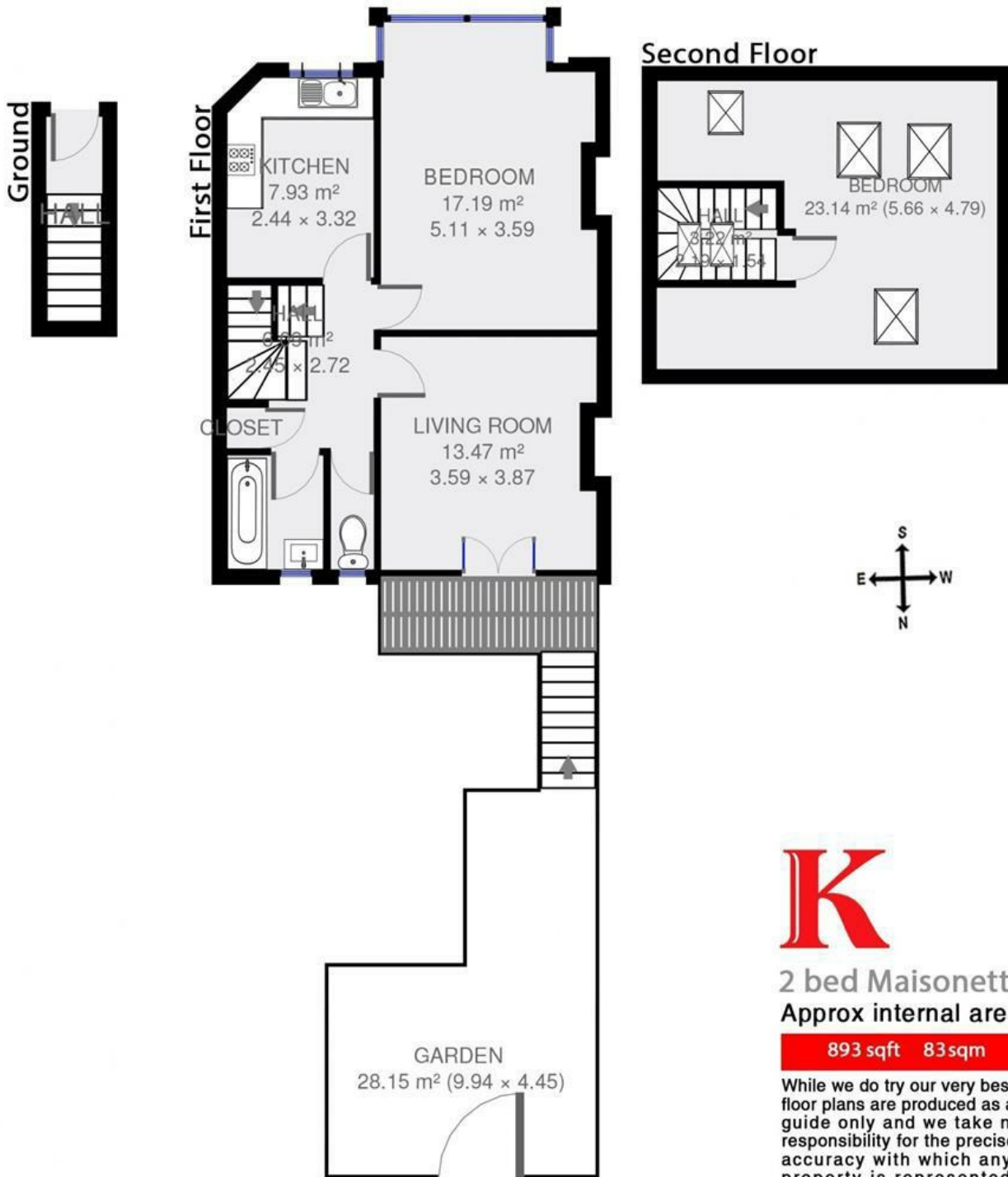
- Bright and airy
- Stylish split level flat
- Around a 10 minute walk to Brixton underground
- Two bedrooms
- Private garden
- Separate kitchen

Council tax band C EPC rating E (52)



Hayter Road, Brixton, SW2

Hayter Road



2 bed Maisonette.
Approx internal area:

893 sqft 83sqm

While we do try our very best, floor plans are produced as a guide only and we take no responsibility for the precise accuracy with which any property is represented

Hayter Road, Brixton, SW2

