



Leander Road, Brixton, SW2

2 bedroom flat to let

£440 Per Week

Part furnished

Property Details

A lovely flat located a short distance from Brixton. The property comprises a bright open-plan living area at the rear of the property which opens onto a private garden ideal for the summer months. Two double bedrooms share a sleek, modern bathroom. The bedroom at the front of the property is a fantastic size and the second bedroom has lovely views onto the side return and rear garden. Brockwell Park and Brixton town center is a short stroll and potential purchasers will benefit from everything Brixton has to offer, including music venues, restaurants, bars and a variety of public transport.

Features

- 2 Bedrooms
- 1 Reception
- Around a 15 minute walk to Herne Hill station
- Close To Transport Links
- Characterful Features
- Short walk to Brockwell Park
- Sought After Location

Council tax band C EPC rating D (65)



Leander Road, Brixton, SW2



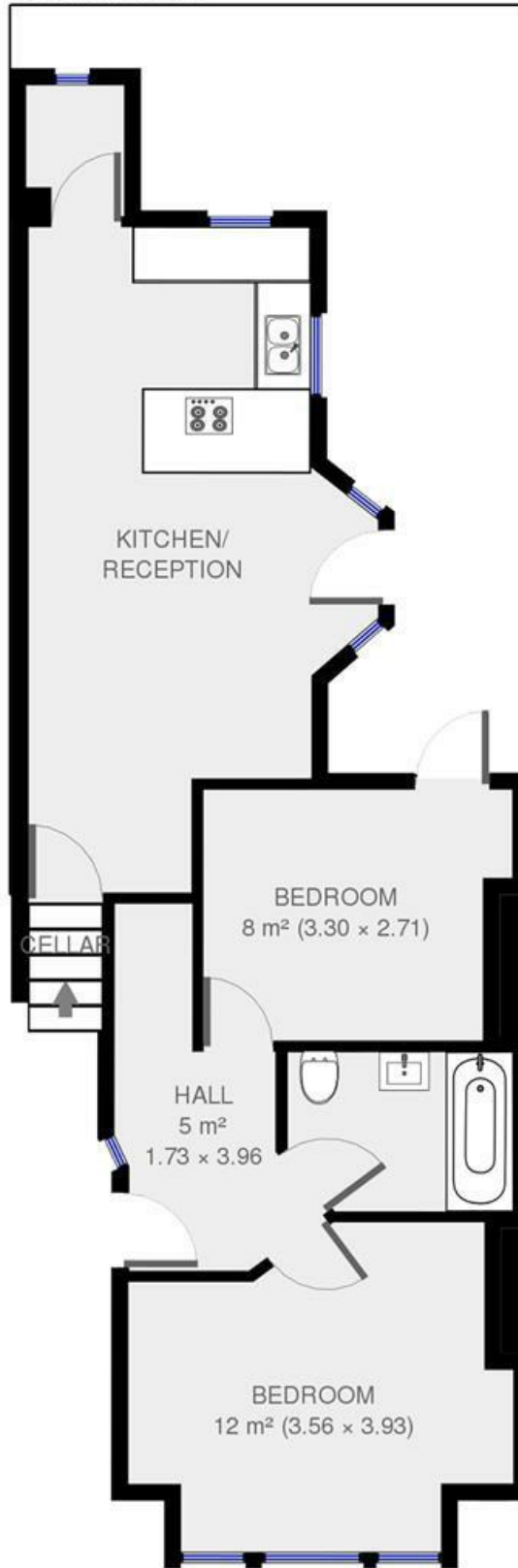
2 bed flat.

Approx internal area:

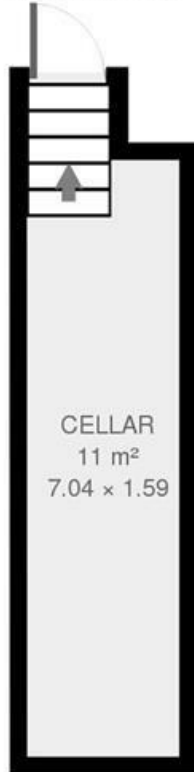
711 sqft 66 sqm

While we do try our very best, floor plans are produced as a guide only and we take no responsibility for the precise accuracy with which any property is represented

Ground Floor



Basement



Leander Road

Leander Road, Brixton, SW2

