



Elfindale Road, Herne Hill, SE24

5 bedroom house for sale

£1,800,000

Freehold

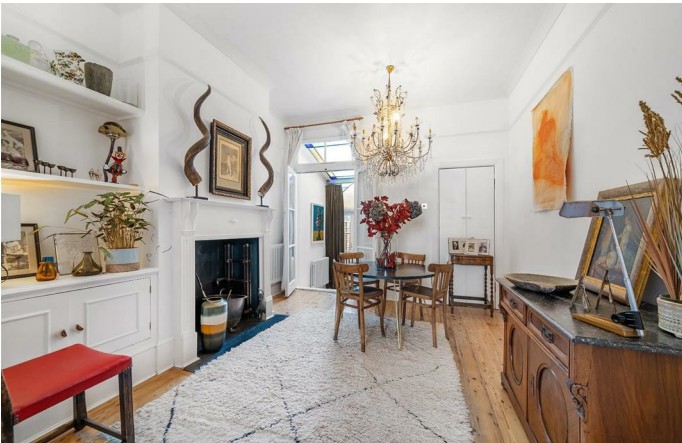
Property Details

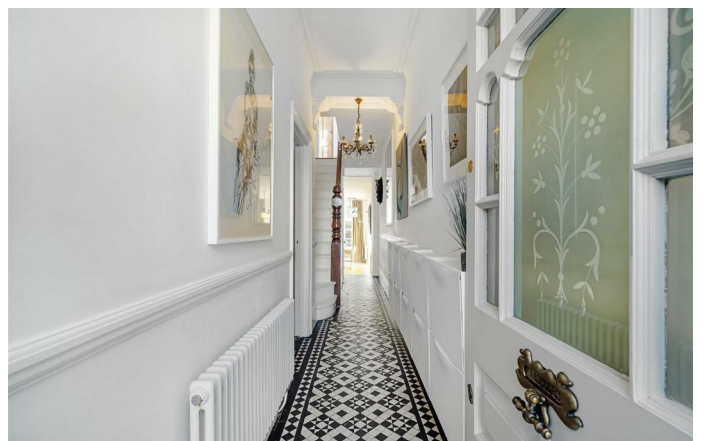
An impressive five double bedroom, three bathroom Edwardian house, on a desirable tree-lined street. This extended home strikes the balance of preserved features with modern design. The double reception displays charming Edwardian character with large arched windows plus a rear stained glass porch. Contemporary and stylish the dine-in kitchen is sleek, a large and airy room providing the ideal family hub. Panelled glass doors span the width of the room, opening to the private garden. The wrap-around garden is a South-West facing suntrap with a patio leading to lawn. Arranged over the first floor are three double bedrooms. One being particularly impressive, spanning the width of the property. The further two bedrooms are towards the rear with garden views. A large family bathroom separates the rear bedrooms, equipped with a bathtub and separate shower. Atop the house are two large bedroom suites both with modern shower rooms. The suite to the front has a cosy roofpoint nook. The suite to the rear, access to eaves storage, plus fantastic views across the rooftops and skyline. Early registration of interest is advised.

Council tax band F EPC rating D (62)

Features

- Five double bedrooms
- Three bathrooms plus downstairs WC
- South-West Facing private garden
- Edwardian freehold house
- Preserved features
- Over 2,100 square feet of internal space
- Catchment area for outstanding schools
- Dulwich Village and Herne Hill a ten-minute walk
- Brockwell Park nearby





Elfindale Road, Herne Hill, SE24

Elfindale Road, SE24
5 Bedroom House

APPROXIMATE GROSS INTERNAL AREA: 2145 SQ FT / 199.3 SQ M



While we try our very best, floor plans are produced as a guide only and we take no responsibility for the precise accuracy with which any property is represented.

Elfindale Road, Herne Hill, SE24

