

**Arodene Road, Brixton, SW2**

2 bedroom flat to let

£485 Per Week

Furnished

Property Details

Two double bedroom garden flat located moments away from the hustle and bustle of Brixton, the flat comprises : a large, bright open-plan living area opens onto a larger than average private landscaped garden with a decked seating area - perfect for summer; Two double bedrooms share a sleek, modern bathroom, all off a spacious entrance hall. The flat is finished to a high standard and is an elegant mix of contemporary design and characterful features, such as the high ceilings and bay windows. This Victorian conversion is nestled within Arodene Road, an attractive, quiet road located in the heart of Brixton, this popular street benefits from a quiet setting. The property is only a short walk away from the local amenities of vibrant Brixton Hill, the ever-popular Brockwell Park and the fantastic variety of amenities on offer in central Brixton. With access to the Victoria line at Brixton tube station also within a 12-minute stroll, the location cannot be overstated.

Features

- Two double bedrooms
- Open plan reception and kitchen
- Spacious private garden
- Bright and airy throughout
- Close to Central Brixton
- Close to Brockwell Park
- Great transport links

Council tax band D EPC rating D (62)



Arodene Road, Brixton, SW2

K

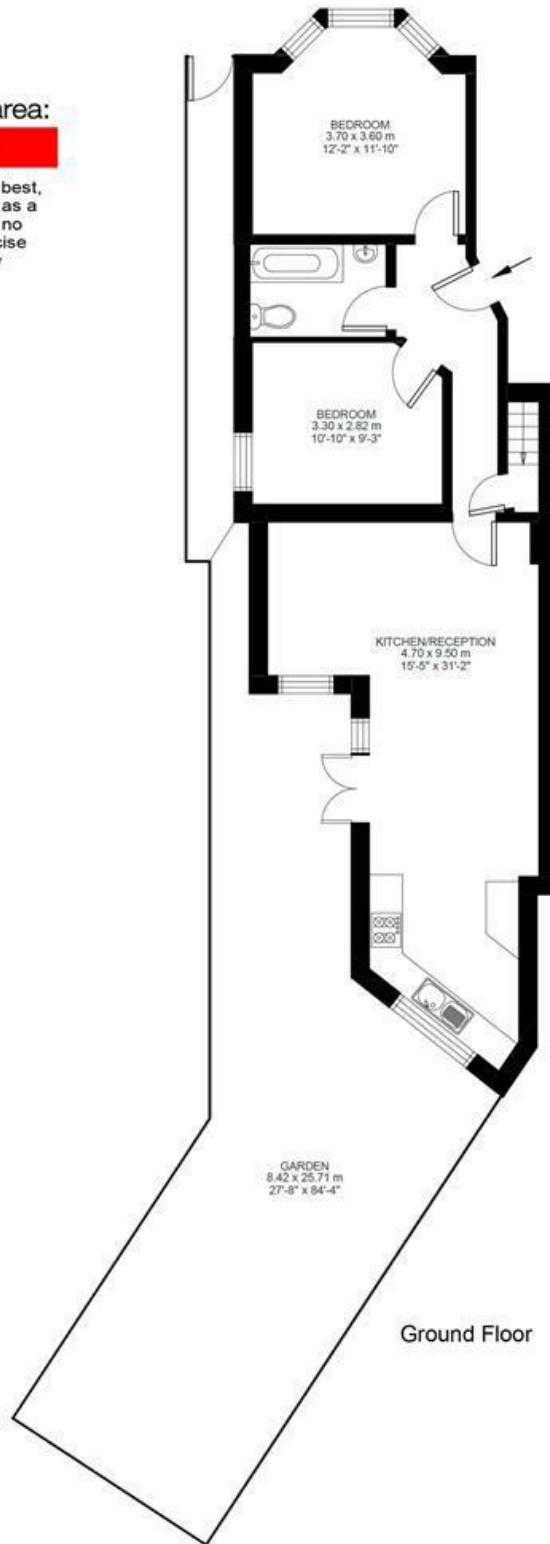
2 Bed flat

Approx internal area:

799 sqft 74 sqm

While we do try our very best, floor plans are produced as a guide only and we take no responsibility for the precise accuracy with which any property is represented

Arodene Road



Ground Floor



Arodene Road, Brixton, SW2

