

Lambert Road, SW2

2 bedroom flat to let

£503 Per Week

Part furnished

Property Details

An exquisite, large and bright two bedroom flat complete with beautiful patio garden - situated around a 12-13 minute walk to Brixton station. This lovely property comprises a light and airy living room, separate sleek kitchen, two double bedrooms (second bedroom is the perfect large office space), family bathroom plus extra shower room in master bedroom and a shared garden with private gated side access - a perfect and peaceful escape for the summer months. Living here, you will be walking distance of both Brixton and Herne Hill stations linking you effortlessly to central London as well as being under a fifteen minute walk from the hustle and bustle of Brixton High Street where you can find a plethora of popular pubs, bars, restaurants and shops.

Features

- Two bedrooms
- Private garden
- Good transport links
- Close to town centre
- Light and airy
- Family bathroom

Council tax band B EPC rating D (57)





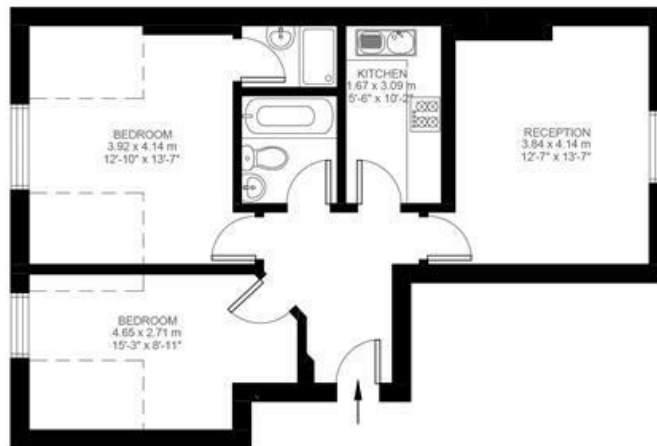
Lambert Road

2 Bedroom Flat

Approx internal area:

653 sqft 61 sqm

While we do try our very best, floor plans are produced as a guide only and we take no responsibility for the precise accuracy with which any property is represented



Second Floor



Lambert Road, SW2

