



Acre Lane, Brixton, SW2

1 bedroom flat - purpose built for sale

£525,000

Leasehold

Property Details

A remarkable one bedroom apartment with a private terrace, in this stunning Art-Deco style modern building with high-quality fixtures and fittings. This secure flat boasts an appealing open-plan reception creating a great entertaining space, with parquet flooring plus a sleek integrated kitchen with plenty of storage. The living area is vast with ample room for a large dining table. The sizeable terrace can be savoured all year around, a South-facing suntrap in the summer, with a windbreak ideal for cosying up as the weather turns. The double bedroom is large yet soothing with built-in wardrobes. There is further storage in the entrance hall. The bathroom is luxurious with feature lighting, bath and shower overhead. This particular home benefits a favourable position quietly facing away from Acre Lane in an elevated position on the top floor, with fantastic insulation and double glazed windows for high energy efficiency. This sought-after development has just twenty-six privately owned apartments, beautiful communal areas, a lift and bike storage,

Council tax band C EPC rating C (80)

Features

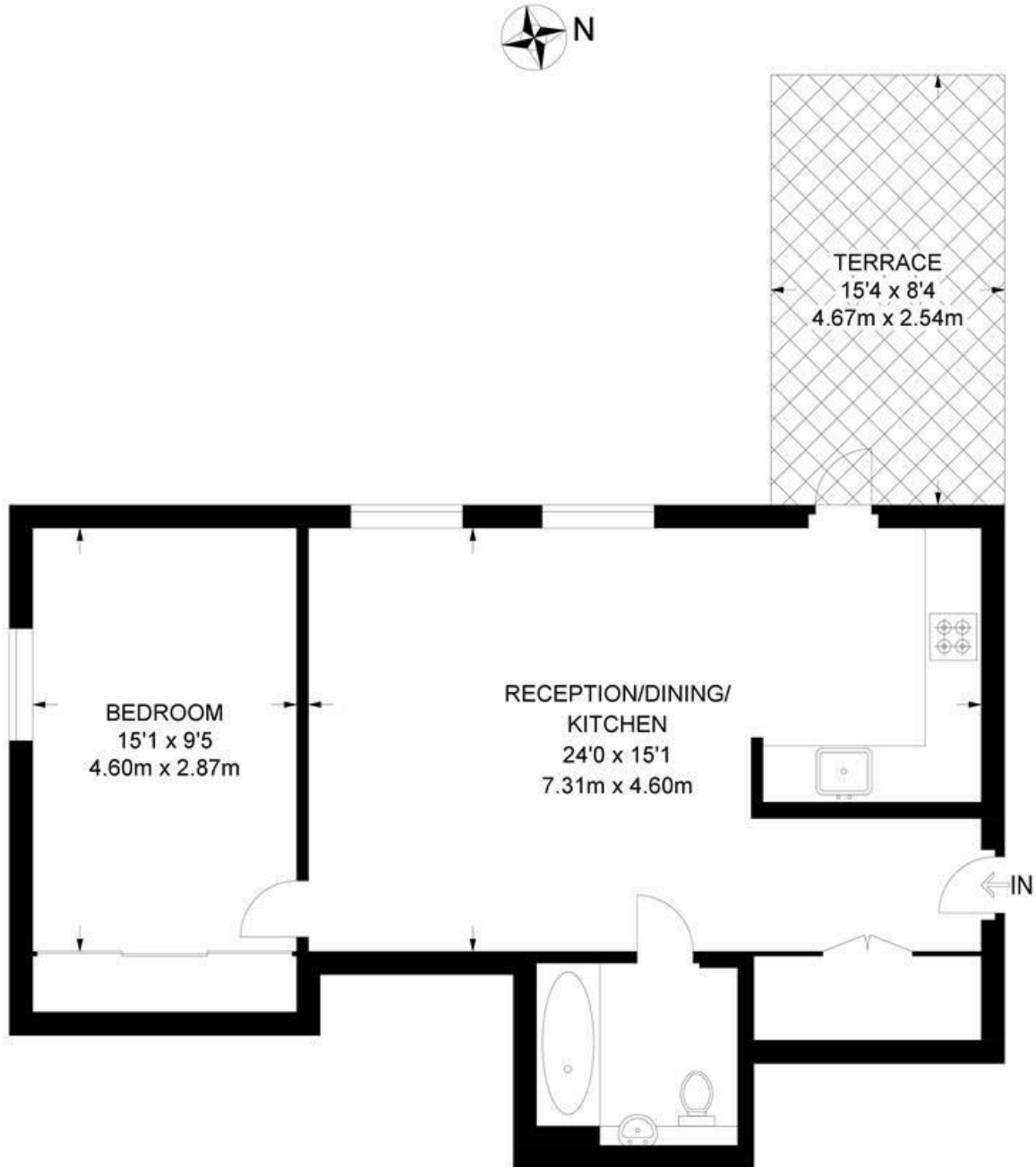
- One double bedroom
- South facing private terrace
- Secure modern build in Art-Deco style
- Quiet position within the building
- High-end finishes
- Bright and airy
- Build warranty
- Lift and bike storage
- Central location in Brixton
- Victoria and Northern Lines



Acre Lane, Brixton, SW2

Ivor House, SW2
1 Bedroom Flat

APPROXIMATE GROSS INTERNAL AREA: **608 SQ FT / 56.5 SQ M**



FOURTH FLOOR



While we try our very best, floor plans are produced as a guide only and we take no responsibility for the precise accuracy with which any property is represented.

Acre Lane, Brixton, SW2

