



Tulse Hill, Brixton, SW2

2 bedroom flat - purpose built to let

£415 Per Week

Furnished

Property Details

This stunning two double bedroom with private balcony ideally located a few minutes away from Brockwell Park. Having such a vast and popular outside space on the doorstep is one of many selling points of this lovely property, Brixton tube station is only a short walk, as is the idyllic Herne Hill and all the charming amenities it has on offer nestled just on the other side of the park.

The square footage available has been maximised to make use of all space, without wasting an inch on larger, unused hallways. Both bedrooms are very well proportioned spaces and has ample built in storage. The large and airy reception room is separate and also leads out to your very own private balcony, the kitchen is modern and fully integrated, provides plenty of storage options and surface space. An attractive contemporary family bathroom complete this charming flat. The flat is arranged over the top floor, benefitting not only from fantastic security including an entry door system.

As locations go, it is fantastic. A short walk to the centre of Brixton, whilst a large supermarket and various cafes, pubs and restaurants such as Brockwell Blend, The Hootenanny and Naughty Piglets are also right on your doorstep. The amenities in Herne Hill are also a pleasant ten minute stroll through Brockwell Park and Tulse Hill train station is within a five-minute walk with trains to London Bridge and central London via Southern Rail and the Thameslink.

Features

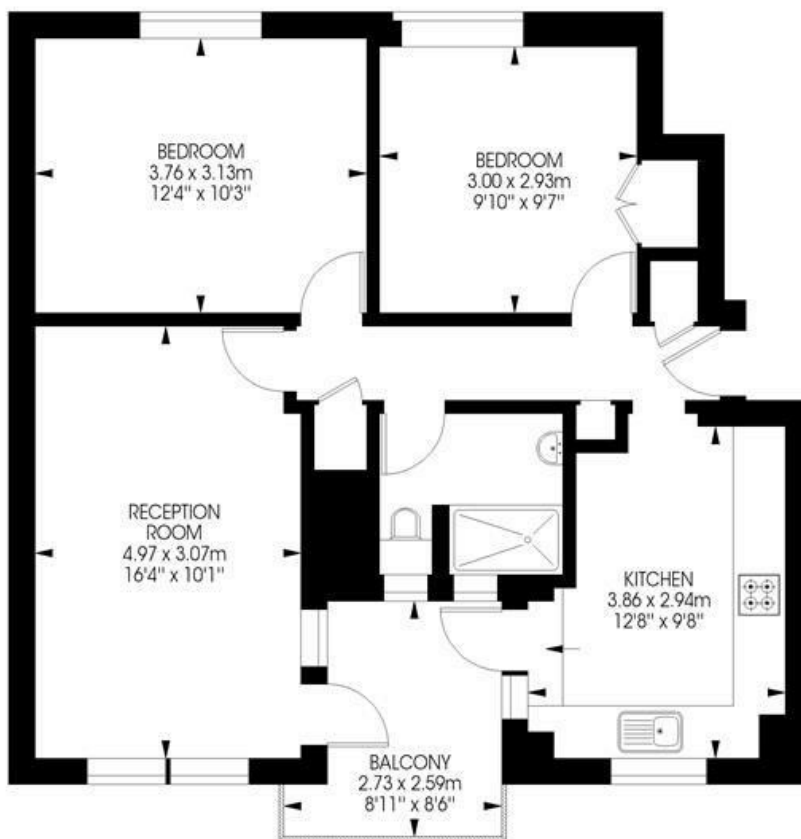
- Two bedrooms
- Large reception
- Private balcony
- Modern throughout
- Close to Brockwell Park
- Close to transport links

Council tax band B EPC rating D (64)



**Worthington House,
Tulse Hill, SW2
2 bedroom flat**

Approximate internal area: **635 sqft / 59 sqm**



Second Floor



While we try our very best, floor plans are produced as a guide only and we take no responsibility for the precise accuracy with which any property is represented.

Tulse Hill, Brixton, SW2

