

Belvedere Place, Brixton, SW2

2 bedroom flat - purpose built for sale

£500,000

Leasehold

Property Details

A bright two bedroom, two bathroom flat with a Juliet balcony, gardens and parking, within a sought-after, gated mews. This apartment has multiple perks, set peacefully to the rear of the first building, enjoying additional light due to the South-facing aspect, plus allocated off-street parking and fibre optic broadband. The open-plan living space has a cosy lounge area, space for a large dining table and a Juliet balcony. The separate kitchen is adjacent, with plenty of storage options and an ergonomic layout. The principal bedroom has generous proportions, plenty of space for storage plus an en-suite with rain shower, large mirror and stylish sink. The second bedroom has built-in sliding wardrobes, a versatile room easily repurposed to suit needs. The family sized bathroom has a bath and there is further storage in a hallway cupboard. With access to two communal gardens, there is plenty of outside space for the summer months, plus bike storage by arrangement and an unrivalled location.

Features

- Two bedrooms
- Two bathrooms
- Juliet balcony plus access to two communal gardens
- Allocated off-street parking
- Secure gated mews development
- Secure bike storage by arrangement
- Central quiet location, close to the action
- Walking distance to Northern and Victoria lines
- Chain-free

Council tax band D EPC rating C (79)

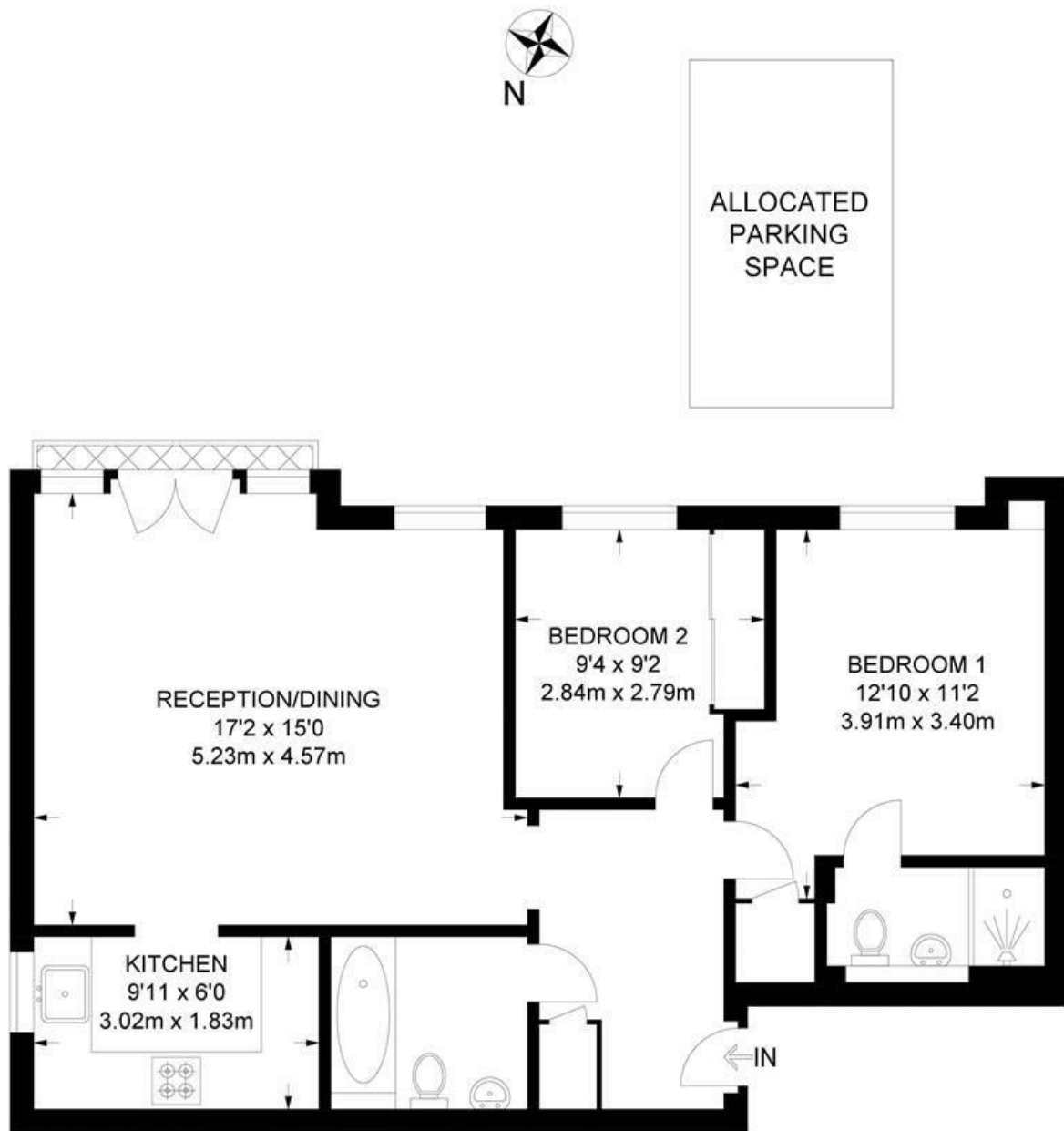




Belvedere Place, Brixton, SW2

Belvedere Place, SW2
2 Bedroom Flat

APPROXIMATE GROSS INTERNAL AREA: **673 SQ FT / 62.5 SQ M**



FIRST FLOOR



While we try our very best, floor plans are produced as a guide only and we take no responsibility for the precise accuracy with which any property is represented.

Belvedere Place, Brixton, SW2

