

**Lyham Road, Brixton, SW2**

2 bedroom flat to let

£450 Per Week

Furnished

Property Details

A stunning example of a two-bedroom flat in excellent condition, nestled on the first floor flat of an attractive Victorian conversion. Tucked away quietly at the back of the building is a comfortable double bedroom, natural light are a running theme throughout this spacious apartment and the bedroom is no exception, the open-plan living space is spacious and the kitchen is well-equipped with great storage options and has a family sized bathroom. This flat is nestled within a popular pocket of SW2, sandwiched between Brixton and Clapham. The cafes, bars and restaurants of up-and-coming Acre Lane are easily accessible, wWithin a further few minutes' walk down the road, you will find yourselves in the heart of Brixton, with Brixton Village, POP Brixton, The Ritzy cinema and the legendary Brixton Academy all at their fingertips. In the other direction, vibrant and diverse Clapham High Street offering cracking nightlife, culinary delights and the green open spaces of Clapham Common. A short 10-minute stroll brings you to Abbeville Village with an abundance of local shops and will benefit from the Northern Line (Clapham North and Clapham Common tube stations) and the Victoria Line (Brixton tube station).

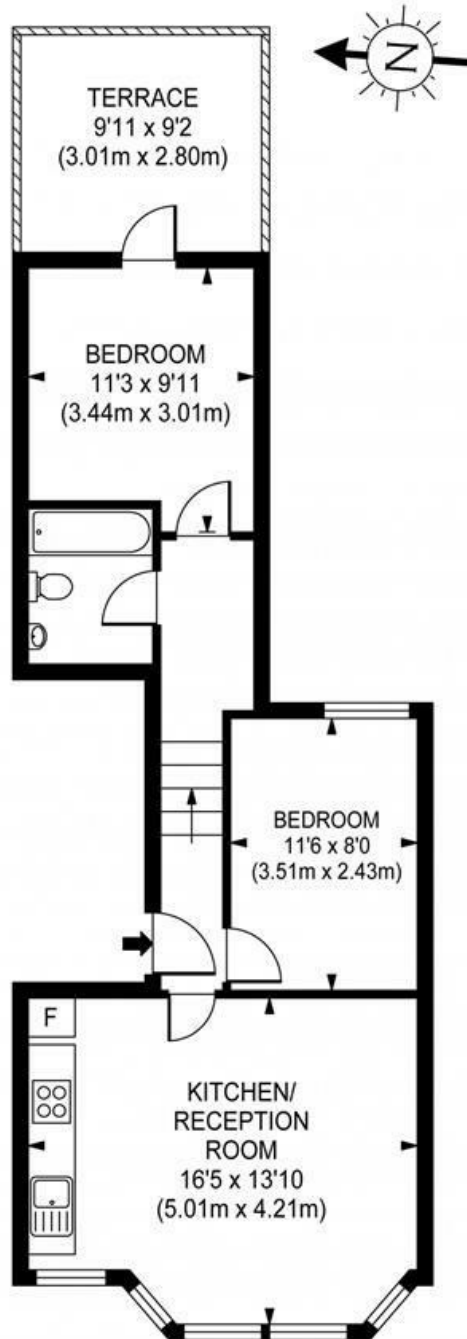
Council tax band C **EPC rating D (66)**

Features

- Balcony
- Two bedrooms
- Close to town centre
- Good transport links
- Light and Airy
- Furnished



Lyham Road, Brixton, SW2



Gross Internal Area 505 sq ft/ 47 sq meters

Whilst every attempt had been made to ensure the accuracy of the floorplan shown, all the measurements, positioning fixtures, fittings and any other data shown are an approximate interpretation for illustrative purposes only and are not for scale. No responsibility is taken for any error, omission, miss-statement or use of data shown.

Lyham Road, Brixton, SW2

