



**Acre Lane, SW2**

1 bedroom flat to let

**£403 Per Week**

Furnished

## Property Details

This is a brilliant one bedroom apartment on the third floor (with lift access) of this landmark art deco building in Brixton. Located half way between Clapham Common and central Brixton you are within an easy stroll to both vibrant areas and within an easy commute into central London. The kitchen has been opened up to the reception room and completely refitted giving you a great space for entertaining or chilling on a night in. The bathroom has recently been upgraded and re-fitted giving you a modern and fresh look and the bedroom is a very good sized double. The flat has new double glazing throughout with plenty of natural light flooding in. As well as being within a secure building the communal areas also include a large communal garden and use of a secure bike store for cyclists.

## Features

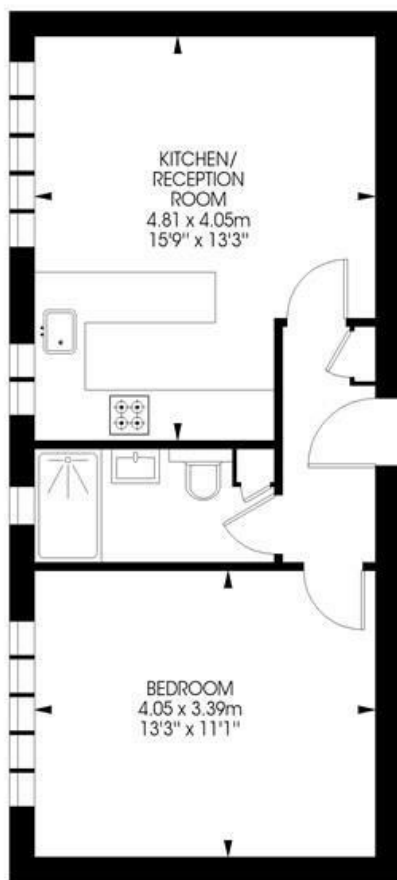
- Heating included
- Safe & secure building
- New kitchen & Bathroom
- Plenty of natural light
- Excellent transport links
- Communal garden
- Secure bike store

Council tax band B    EPC rating C (72)

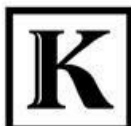


Sandhurst Court,  
Brixton, SW2  
1 bedroom flat

Approximate internal area: **420 sqft / 39 sqm**



**Third Floor**



While we try our very best, floor plans are produced as a guide only and we take no responsibility for the precise accuracy with which any property is represented.

Acre Lane, SW2

