



**Corrance Road, Brixton, SW2**

2 bedroom flat to let

**£484 Per Week**

Furnished

## Property Details

A stunning two bedroom split level flat in an attractive Victorian conversion on a sought after road. Situated on Corrance Road the property is a short walk from local shops, Brockwell Park and the enormous variety of nightlife on offer in central Brixton, as well as first stop on the Victoria line at Brixton tube station, its location cannot be overstated.

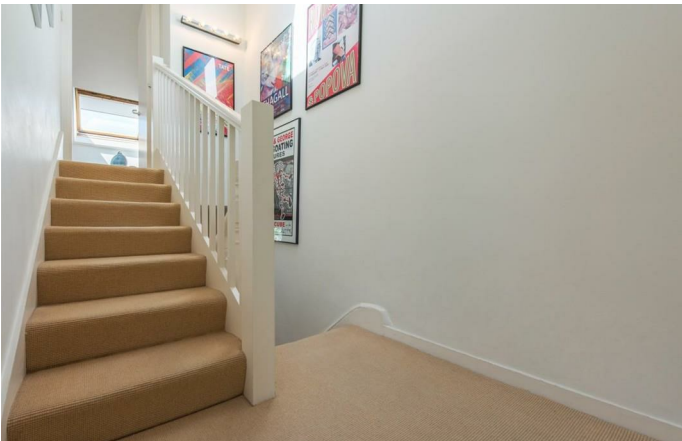
This flat comprises a light and airy open-plan living area which spans the width of the building with a bay window and ample room to relax and dine. Two bedrooms share a contemporary bathroom, all off a split-level entrance hall. The master bedroom is spacious and the smaller second bedroom/study is ideal for anyone looking to use as a guest room/ home office.

Corrance Road is situated a ten-minute stroll to the new culinary and nightlife mecca of South London, Brixton and a fifteen-minute stroll to the green open spaces of Brockwell Park. This characterful first floor flat is perfect for anyone who wants to be close to the action but would prefer to avoid the car horns and the noise of late night revellers. First stop on the Victoria Line at Brixton tube station is a short stroll down the Acre Lane and multiple buses run up and down Brixton Hill, whisking you down to the tube within a few minutes and through into central London. The buses offer a great alternative to the tube and train stations for commuters into the city centre.

**Council tax band D**      **EPC rating D (68)**

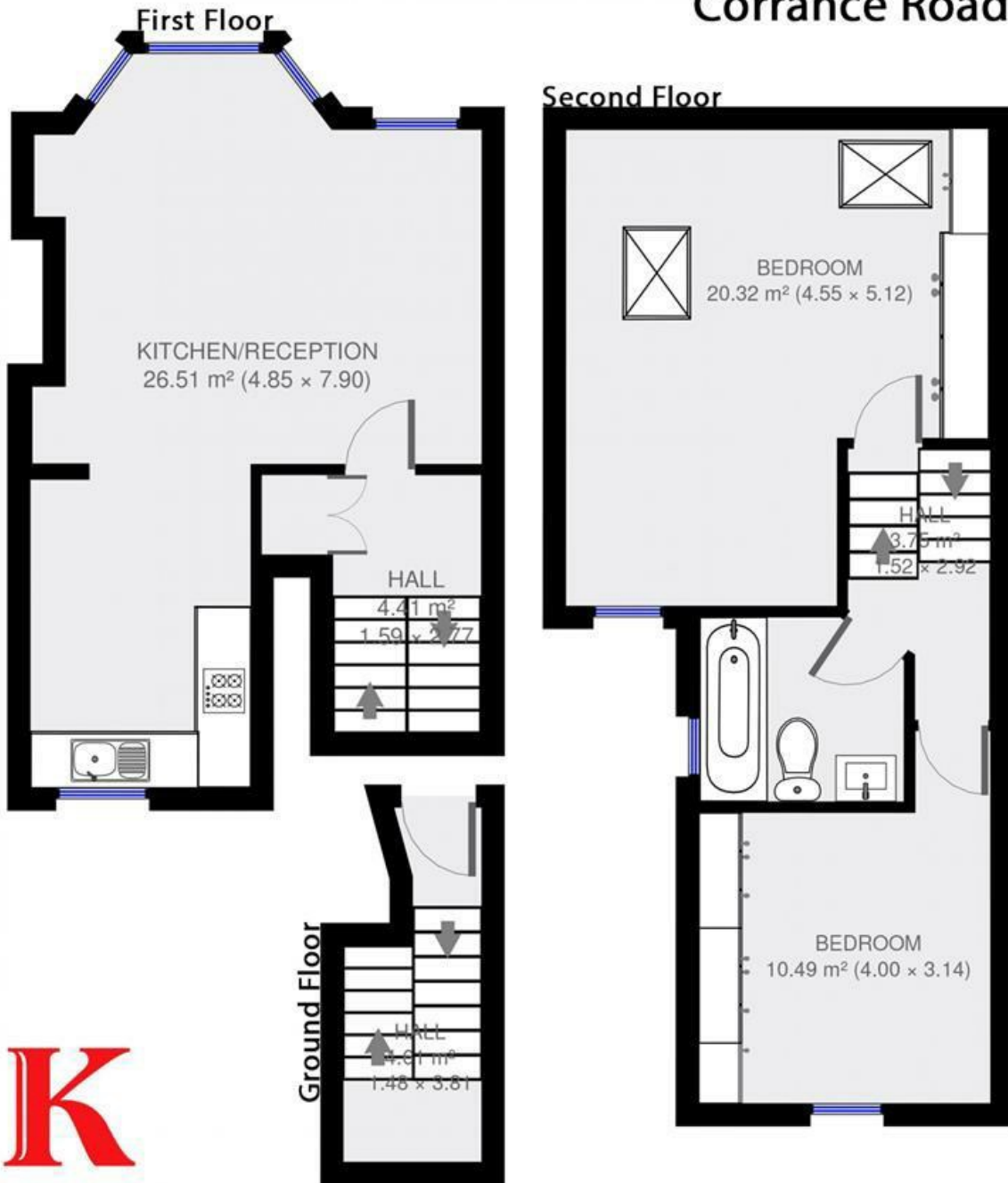
## Features

- Two bedrooms
- Modern bathroom
- Open plan kitchen and reception
- Split level
- Victorian
- Light and airy
- Minutes from Central Brixton
- Close to high street amenities



Corrance Road, Brixton, SW2

## Corrance Road

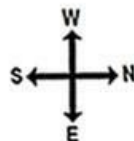


2 bed Flat.

Approx internal area:

**808 sqft 75 sqm**

While we do try our very best, floor plans are produced as a guide only and we take no responsibility for the precise accuracy with which any property is represented



Corrance Road, Brixton, SW2

