



Canterbury Crescent, Brixton, SW9

2 bedroom flat - purpose built to let

£438 Per Week

Furnished

Property Details

This stunning and split level two double bedroom with study room ideally located a few minutes away from Central Brixton, having such a vast and popular transport links and amenities on the doorstep is one of many selling points of this lovely property.

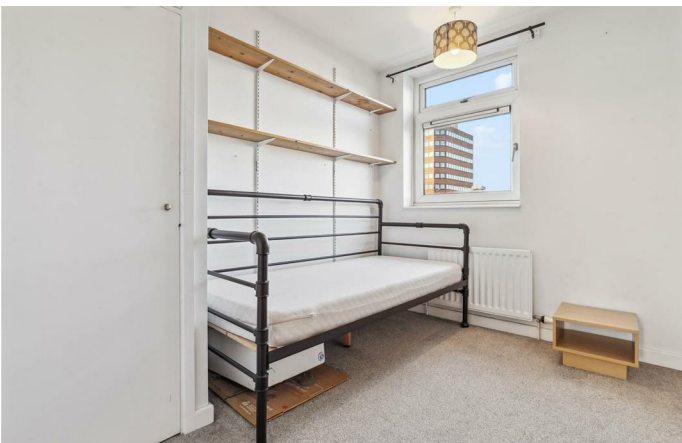
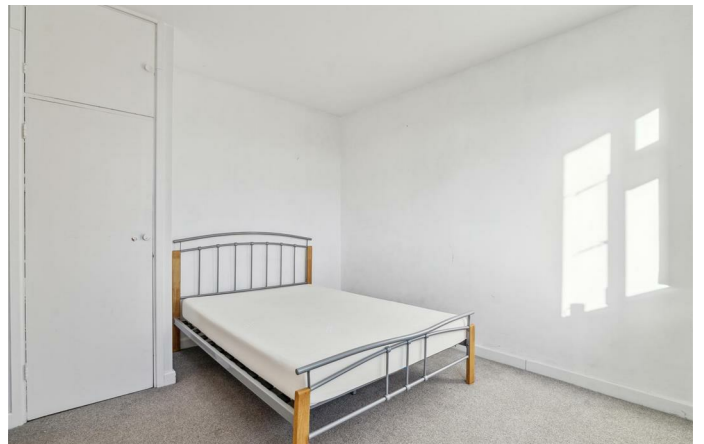
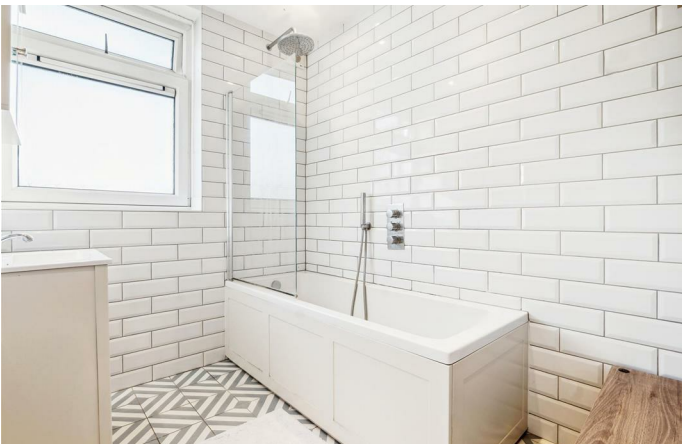
The square footage available has been maximised to make use of all space, without wasting an inch on larger, unused hallways. Both bedrooms are very well proportioned spaces, has ample built in storage and also further benefits from a home office/study room. The large and airy reception room is separate as is the kitchen and provides plenty of storage options and surface space. An attractive contemporary family bathroom complete this charming flat.

As locations go, it is fantastic. The transport links are second to none, with only a five-minute walk to Brixton underground station, the first stop of the Victoria Line with a short commute to the city. The property is a 30-second walk from multiple bus stops taking you all across London. The location is ideal with the green, open spaces of Wyck Gardens within a ten-minute walk, with 31 acres of beautiful park which hosts; horse stables and riding club, kids play area, urban cricket pitch, football pitches and a community garden. In the other direction, you are a stroll away from the award-winning Brockwell Park, one of South London's most popular parks. Brixton Recreation Centre is a minute walk away with a gym, squash courts and indoor bowling to name a few, there is something for everyone.

Council tax band C EPC rating D (63)

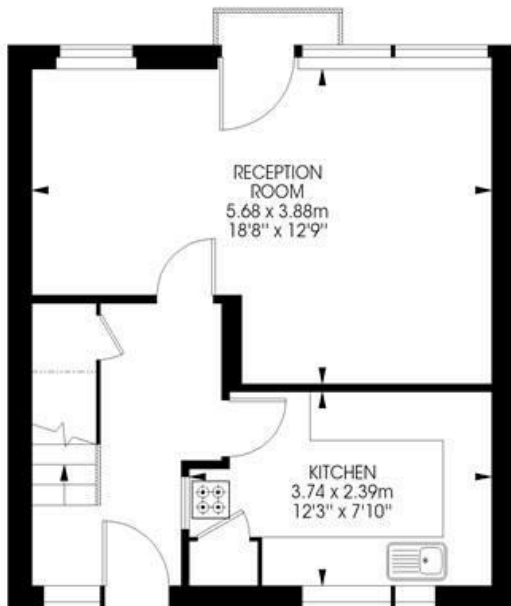
Features

- Two double bedrooms
- Additional study room
- Split level
- Seperate reception
- Close to Central Brixton
- Close to High street amenities

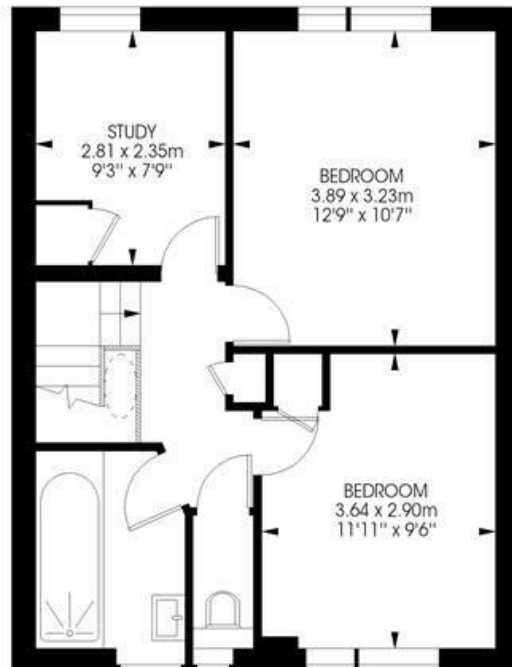


Burgate Court,
Brixton, SW9
2 bedroom flat

Approximate internal area: **861 sqft / 80 sqm**



First Floor



Second Floor



While we try our very best, floor plans are produced as a guide only and we take no responsibility for the precise accuracy with which any property is represented.



Canterbury Crescent, Brixton, SW9

