



**Josephine Avenue, Brixton, SW2**

2 bedroom flat to let

**£450 Per Week**

Furnished

## Property Details

We are proud to offer this spacious two bed period conversion offering a large and well appointed open plan kitchen and living area, with large windows and plenty of room for a dining area. The reception room opens out to the private wrap around garden, the first bedroom is a good sized spacious double bedroom, it has large sash windows making the bedroom feel very bright. The second bedroom is also a good sized double bedroom followed by a well maintained family bathroom. The property is situated in the heart of the ever-popular Josephine Avenue Conservation area, The centre of Brixton, South London's new culinary mecca, is a thirteen-minute walk, with all it has to offer in terms of restaurants, nightlife, transport links and Brockwell Park is on your the doorstep. Herne Hill is a pleasant fifteen-minute walk through the park and Brixton Village, and Herne Hill's pubs and restaurants all within easy walking distance.

## Features

- 2 Double bedrooms
- Open plan reception
- Bright and airy
- Conservation area
- Victorian conversion
- Close to Central Brixton
- Close to Brockwell Park

Council tax band D      EPC rating D (64)



# K

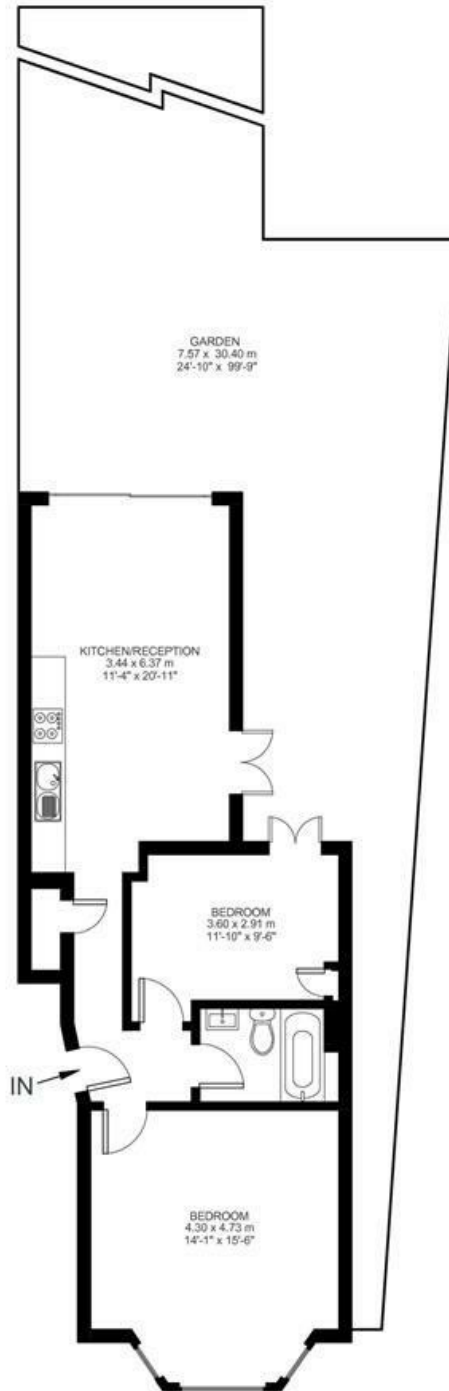
## Josephine Avenue

2 Bed flat

Approx internal area:

**658 sqft 61 sqm**

While we do try our very best, floor plans are produced as a guide only and we take no responsibility for the precise accuracy with which any property is represented



GROUND FLOOR



Josephine Avenue, Brixton, SW2

