



Fortrose Gardens, SW2

2 bedroom flat to let

£392 Per Week

Furnished/unfurnished

Property Details

A wonderful two double bedroom split level garden flat located within a short walk from Streatham Hill and bus ride away from Central Brixton . The flat comes complete with a spacious reception room that seamlessly flows out onto your own private garden, a separate and spacious kitchen with plenty of work top space, family bathroom and two spacious double bedrooms. The property is a 12 minute walk to Streatham Hill, 10 minute bus trip to Clapham South or 10 minute bus trip to Brixton. Clapham and Brixton have a wide range of different bars, pubs, restaurants and transport links so you'll never go short of choice.

Features

- Two bedrooms
- Split level
- Spacious
- Private Garden
- Short bus ride away from Central Brixton
- Close to transport links

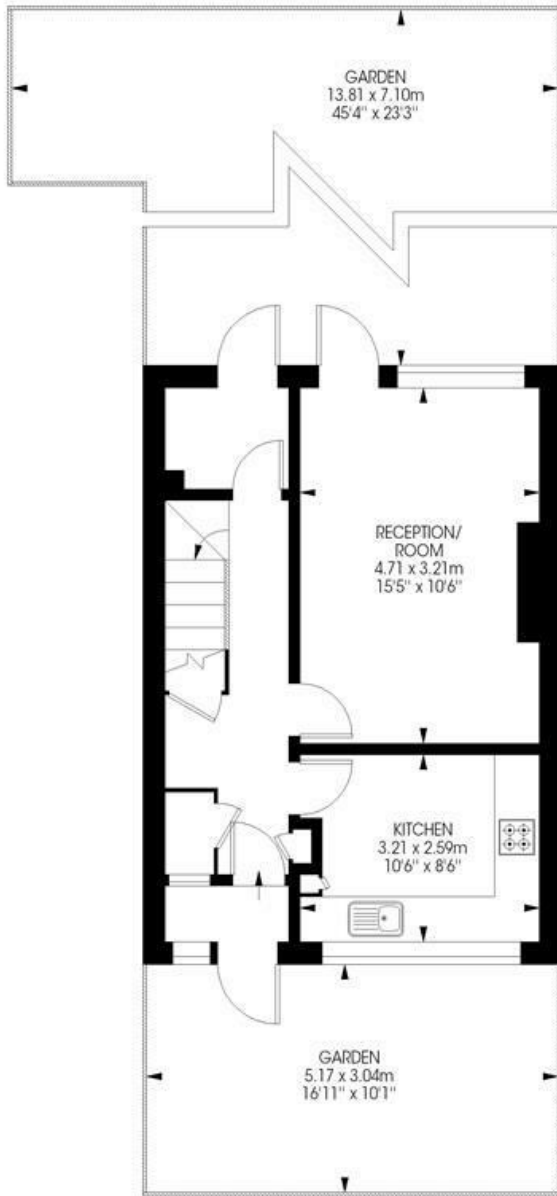
Council tax band B EPC rating D (63)



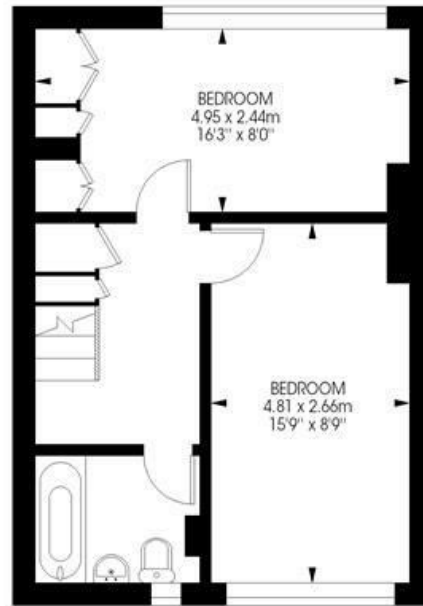
Fortrose Gardens, SW2

Fortrose Gardens,
Streatham Hill, SW2
2 bedroom flat

Approximate internal area: **797 sqft / 74 sqm**



Ground Floor



First Floor



While we try our very best, floor plans are produced as a guide only and we take no responsibility for the precise accuracy with which any property is represented.

Fortrose Gardens, SW2

