**Shandon Road, Clapham, SW4**

2 bedroom flat to let

**£500 Per Week**

Furnished

## Property Details

**\*\*Unavailable - Let for £460pw\*\***

A stunning, lovely, large, two double bedroom garden flat in one of the most sought after streets of the Abbeville road pocket. There is a large through lounge, opening onto the kitchen which in turn opens onto a large patio garden. The master bedroom to the front is very large and light with a bay window and the second double bedroom has direct access onto the side return and rear garden through elegant French doors. The bathroom is modern, clean and attractive. A great rental in a great area.

## Features

- Private garden
- Victorian
- Furnished
- Good transport Links
- Light and airy
- Two bedrooms

Council tax band E    EPC rating D (66)



Shandon Road, Clapham, SW4



2 bed Flat.

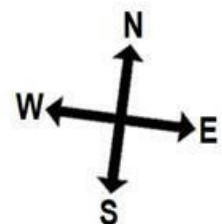
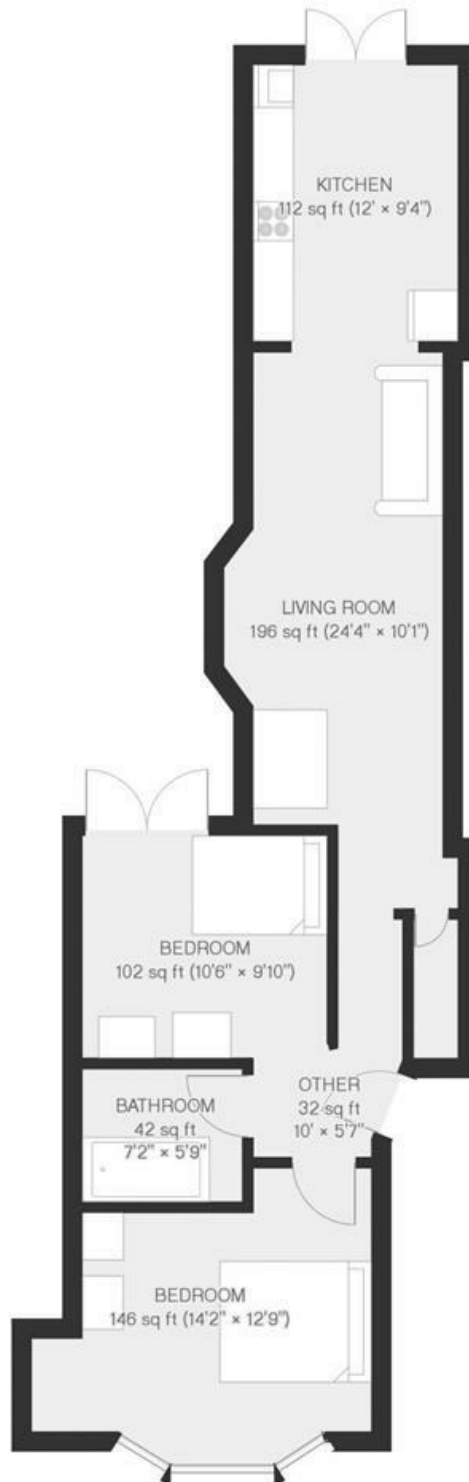
Approx internal area:

**639 sqft 59 sqm**



While we do try our very best, floor plans are produced as a guide only and we take no responsibility for the precise accuracy with which any property is represented

## Shandon Road



Shandon Road, Clapham, SW4

