

**Brixton Hill, Brixton, SW2**

2 bedroom flat - purpose built to let

**£553 Per Week**

Unfurnished

## Property Details

Keating Estates are proud to present to market a superb two double bedroom, two bathroom apartment with a private terrace to the lettings market, set within a sought-after luxury building. Somerset House is located a short walk from the heart of vibrant Brixton and this secure apartment is perfect for anyone who wants to have everything on their doorstep, yet be quietly tucked away with views from the 6th floor.

Natural light is a running theme throughout this stunning apartment, with floor-to-ceiling windows, glazed to the highest modern energy standards, reducing bills and providing beautiful views with some of the most unbelievable sunsets you have ever seen.

Offering fantastic proportions, the reception room forms the heart of the home, benefitting from all the advantages of modern open-plan living with ample space to relax, cook, dine and entertain. The comfortable lounge area is the ideal place to unwind whilst the contemporary kitchen is fully integrated and neatly arranged within sleek cabinetry with light features, still allowing room for a generous dining table. Host in style next to the floor-to-ceiling windows with views over the rooftops towards Battersea, soaking in the sunset as you dine.

Leading out from the reception room to the private terrace, sliding doors allow the living space to

## Features

- Two double bedrooms
- Two bathrooms
- Sought-after modern building
- Private terrace with sunset views
- Communal terrace, garden, lift and bike storage
- Tucked quietly on the 6th floor
- Central Brixton, moments from Brixton tube station and Brixton Village
- A short stroll to Brockwell Park

**Council tax band D**      **EPC rating B (85)**

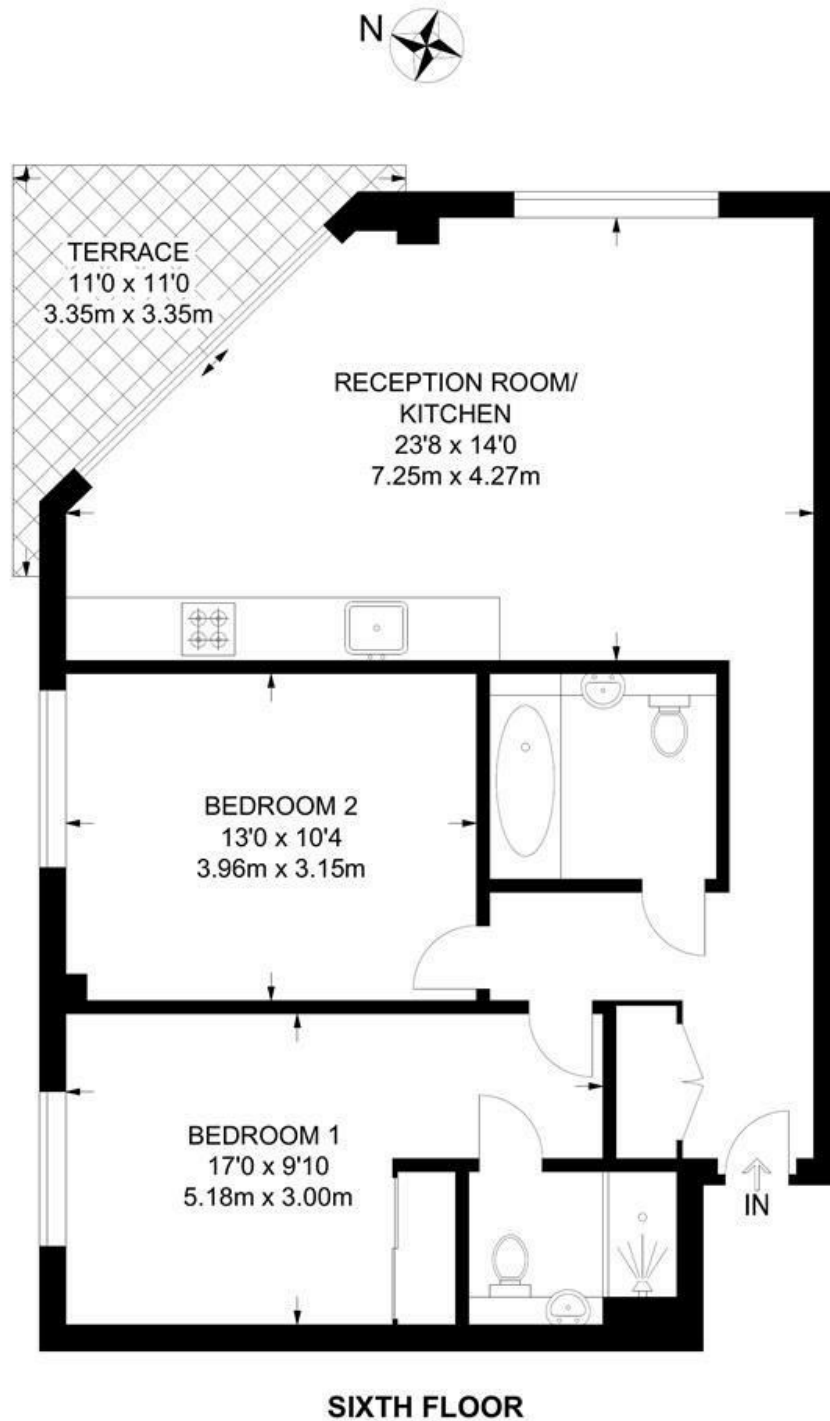




Brixton Hill, Brixton, SW2

**Somerset Place, SW2**  
**2 Bedroom Flat**

APPROXIMATE GROSS INTERNAL AREA: **762 SQ FT / 70.8 SQ M**



Brixton Hill, Brixton, SW2

