



## Brixton Hill, Brixton, SW2

1 bedroom flat - purpose built for sale

£285,000

Leasehold

### Property Details

A stylish one double bedroom apartment with a private South-East facing terrace. Set over the second floor of a popular Art Deco building, within secure, gated grounds. This particular flat benefits from a desirably sunny and quiet position overlooking the central courtyard below, tucked away from Brixton Hill. An exceptional example, fully redecorated with natural wood floors throughout. The reception is spacious and tastefully presented with room to lounge plus space for a dining table. Flooded with natural light through large windows and a French door to the sunny terrace, overlooking the inner courtyard below. Newly fitted the kitchen is appealing, with sleek cabinets offering ample storage and trendy metro tiles. The bedroom is a spacious double with the proportions to accommodate a large wardrobe and relishing the same quiet setting at the rest of the property, peacefully tucked away from the road. The bathroom is a calming space with a modern finish and bright ambience. Of further benefit, there is hallway storage, a lift and off-street parking available upon request. Early registration of interest is advised.

Council tax band B    EPC rating C (72)

### Features

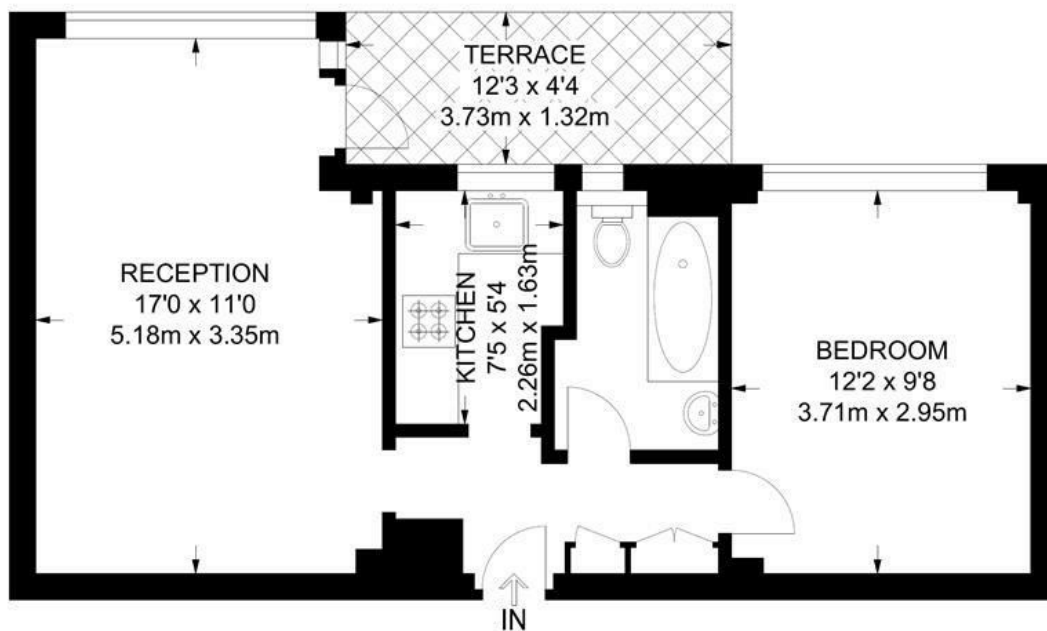
- One double bedroom
- Private South-East facing terrace
- Art Deco gated development
- Parking available on application
- Bright and airy throughout
- Beautifully presented with ample storage
- Tucked away quietly in the development
- Brixton tube a fifteen-minute stroll
- Local amenities on the doorstep
- Chain-free



Brixton Hill, Brixton, SW2

**Dumbarton Court, SW2**  
**1 Bedroom Flat**

APPROXIMATE GROSS INTERNAL AREA: **428 SQ FT / 39.8 SQ M**



**SECOND FLOOR**



While we try our very best, floor plans are produced as a guide only and we take no responsibility for the precise accuracy with which any property is represented.

Brixton Hill, Brixton, SW2

