

Kingswood Road, Brixton, SW2

2 bedroom flat - conversion for sale

£450,000

Share of Freehold

Property Details

An appealing two double bedroom Victorian flat with a private garden. The bright reception offers bespoke shelving and a touch of charming character through classic Victorian embellished ceilings, original sash windows and wooden floorboards. The separate kitchen provides all you need in terms of storage within neutral modern cabinetry topped with wooden worktops and finished with a pretty sash window above the sink. Ideal for sharers, both double bedrooms are set away from one another whilst still being peacefully away from the street with leafy garden views. The larger of the two is set to the rearmost of the home whilst the second has characterful floorboards and French door to the garden. The bathroom is equipped with a bathtub plus shower, set underneath a sash window creating a bright ambience. The icing on the cake is the private wrap-around garden, entertain on the deck or tending to plants around the borders of the lawn. Precedent has been set on the road should the new owner wish to seek permissions to extend the home in the future. The underlying lease has been renewed and the property has been freshly painted.

Council tax band C EPC rating D (66)

Features

- Two double bedrooms
- Private garden
- Separate reception and kitchen
- Characterful features
- Potential to extend STNP
- Local amenities close by
- Walking distance to Brixton and Clapham
- Access to the Northern and Victoria tube lines
- Share of freehold
- Chain-free

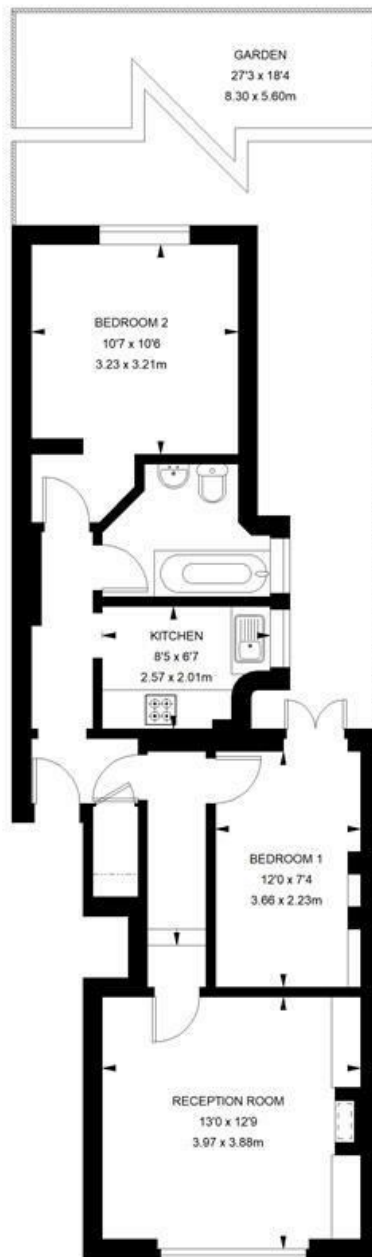


Kingswood Road, Brixton, SW2

Kingswood Road, SW2
2 bedroom flat

APPROXIMATE GROSS INTERNAL AREA :

612 SQ FT / 56.85 SQ M



GROUND FLOOR



While we try our very best, floor plans are produced as a guide only and we take no responsibility for the precise accuracy with which any property is represented.

Kingswood Road, Brixton, SW2

