



Landor Road, Clapham North, SW9

2 bedroom flat - purpose built for sale

£625,000

Share of Freehold

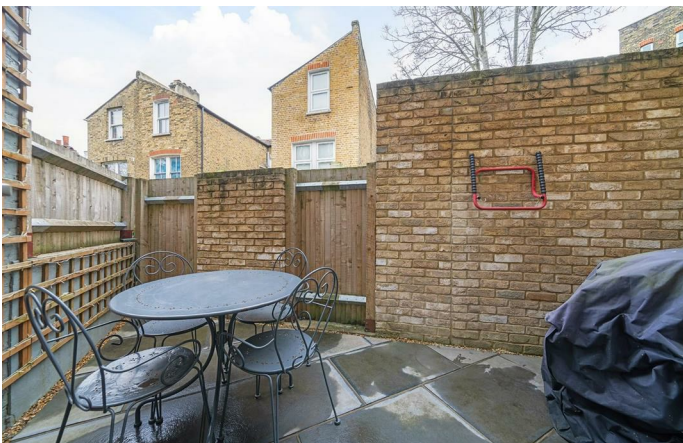
Property Details

A unique two double bedroom, two bathroom apartment with two terraces and a private entrance, benefitting from the good insulation of modern buildings for a quiet setting with high energy efficiency. The spacious open plan reception has the proportions to lounge, dine and cook. The integrated kitchen is designed to maximise storage, wrapping around into a sociable peninsular with generous worktops. Wooden flooring sweeps across the room, into the entrance hall which has a large storage cupboard. The principal bedroom is tucked away from the alluring buzz of the area, with an en-suite shower room, fitted wardrobes and French door to a private terrace, ideal for BBQs or morning coffee. For those looking to rent out a bedroom, the second double is of similar size, conveniently opposite the main bathroom which has a bathtub plus overhead shower. A second terrace is just outside the private front door, set back from the street behind a lockable gate, increasing privacy and providing another spot in which to enjoy the summer. There is shared bike storage, a neighbourly vibe, and great local community plus community garden behind.

Features

- Two double bedrooms
- Two bathrooms
- Two courtyard terraces
- Own private entrance
- Unique modern build
- Bike storage
- Clapham High Street in moments
- Brixton a twelve-minute stroll
- Access to Northern and Victoria lines plus the Overground
- Share of freehold

Council tax band D EPC rating B (90)

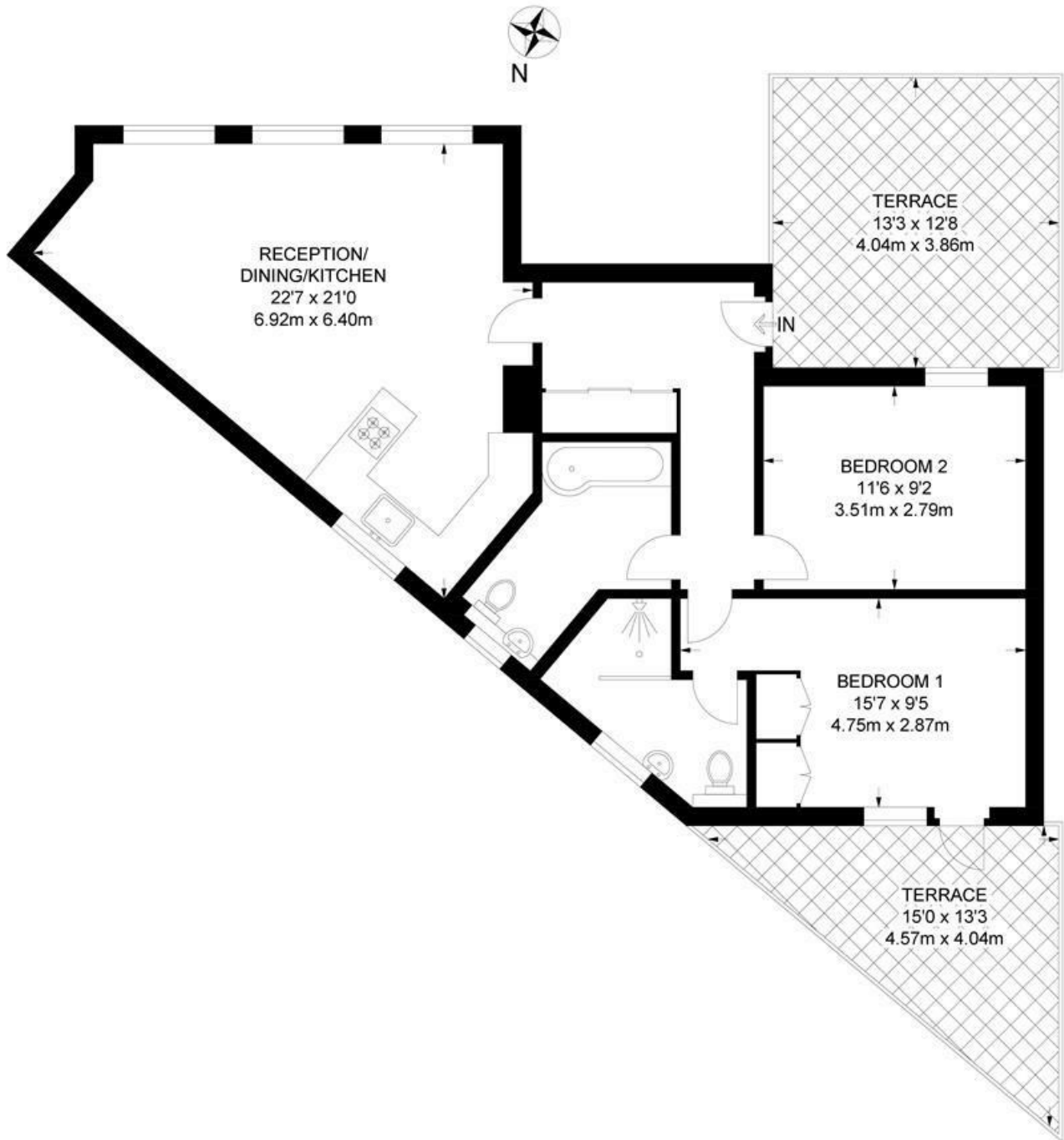




Landor Road, Clapham North, SW9

Landor Road, SW9
2 Bedroom Flat

APPROXIMATE GROSS INTERNAL AREA: **764 SQ FT / 71 SQ M**



GROUND FLOOR



While we try our very best, floor plans are produced as a guide only and we take no responsibility for the precise accuracy with which any property is represented.

Landor Road, Clapham North, SW9

