

Moorland Road, Brixton, SW9

2 bedroom flat for sale

£600,000

Leasehold

Property Details

An incredibly light and airy, split-level, two double bedroom flat with a private garden to the front of this picture-perfect detached period conversion. Tastefully refurbished with an abundance of light due to large sash windows and skylights. Overlooking the park, the reception room features attractive wooden flooring and high ceilings, with space for dining, relaxing and entertaining. The separate kitchen offers generous storage in blue cabinetry, wrapping around in an L-shape, finished with wooden surfaces and a sociable perch ideal for working from home or enjoying company whilst cooking. The stylish bathroom boasts a bathtub with overhead shower, finished with herringbone tiling and chevron floor. A wide hallway creates a versatile nook currently utilised as a play area, easily repurposed to suit needs, such as a home office. A staircase with large window leads to the double bedrooms. Both are generous and very equal in size, perfect for those looking to rent out a room. One of the bedrooms is currently used as a dressing and guest room with fitted wardrobes. A further versatile area between the bedrooms is fitted out as a nursery at present.

Features

- Two double bedrooms
- South-facing private garden
- Detached Grade II listed conversion
- Nearly 1,000 square feet of internal space
- Split over two floors
- Bright and airy throughout
- Stylishly refurbished
- Central location close to Brixton
- Overlooking park to the rear
- Victoria Line an eight-minute stroll

Council tax band D EPC rating C (78)

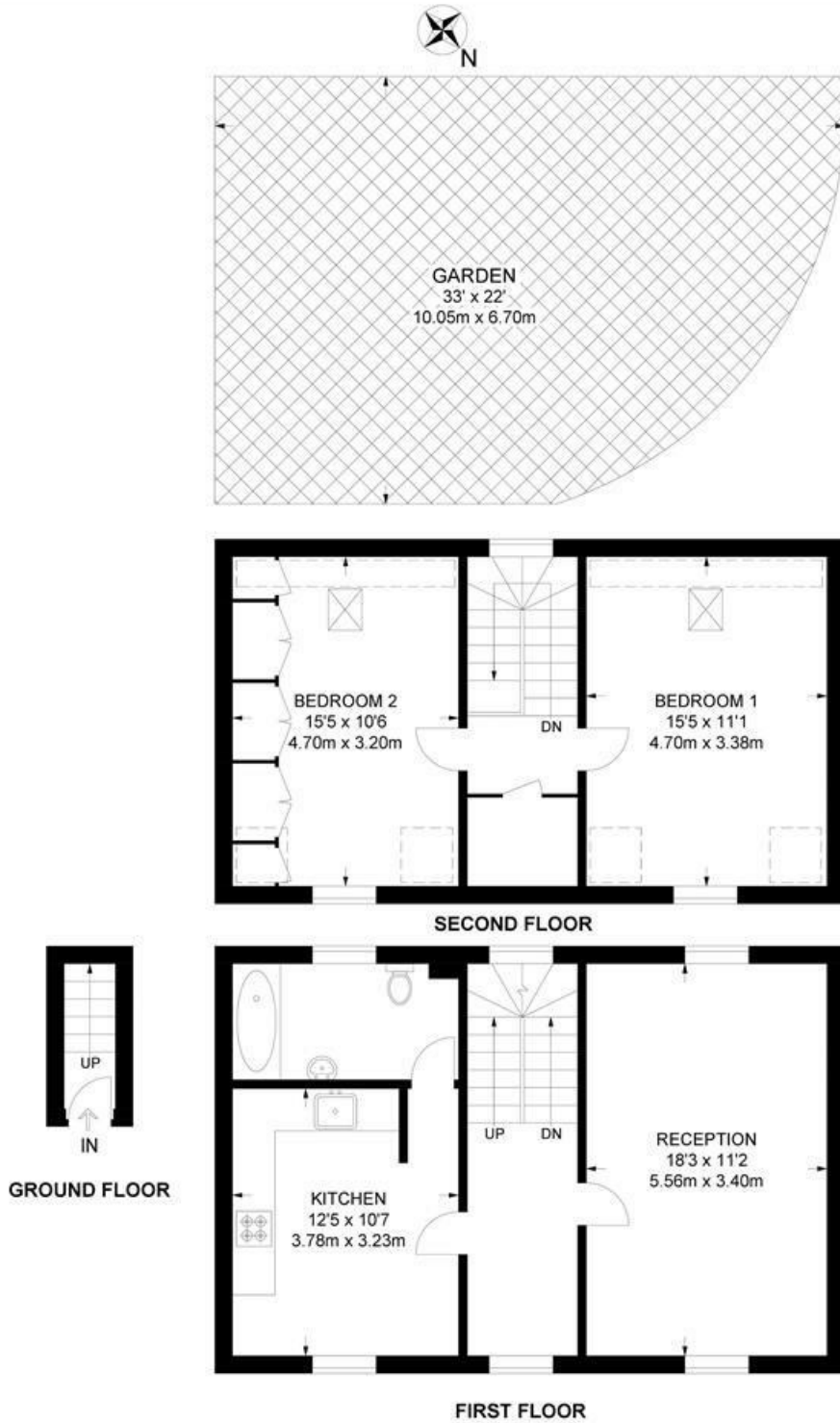




Moorland Road, Brixton, SW9

Moorland Road, SW9
2 Bedroom Flat

APPROXIMATE GROSS INTERNAL AREA: 971 SQ FT / 90.2 SQ M



While we try our very best, floor plans are produced as a guide only and we take no responsibility for the precise accuracy with which any property is represented.

Moorland Road, Brixton, SW9

