

**Brixton Road, Brixton, SW9**

2 bedroom flat to let

**£657 Per Week**

Furnished

## Property Details

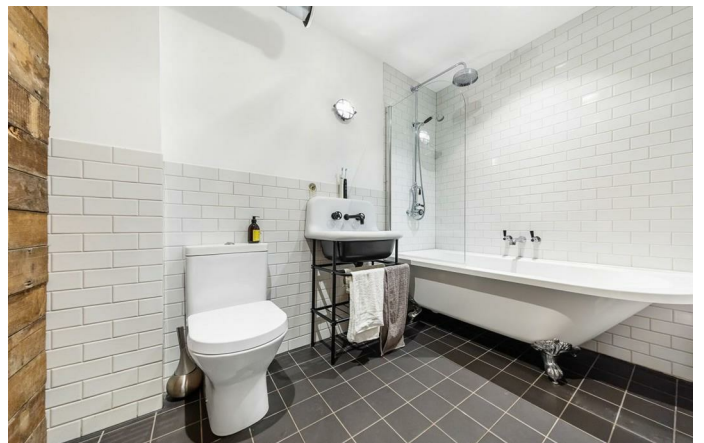
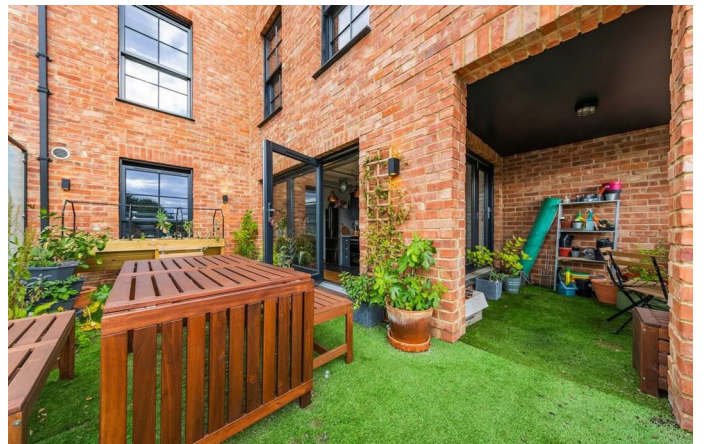
This is a fantastic two-bed, contemporary new build, offering excellent living space. The flat comprises a bright and airy 'L-shaped' open plan reception and kitchen diner which leads out to a private roof terrace, two large double bedrooms with plenty of natural light, and a modern family modern. With many appealing features such as galvanized sprinklers, exposed vents, feature walls, marble worktops, hardwood flooring and retro appliances, this property oozes character. The building benefits from a 3,000 square foot gym which residents can sign up to.

## Features

- Two Bed
- Open plan
- High spec throughout
- Private roof terrace
- Bright and Airy throughout
- Modern development
- Walking distance to the northern and victoria tube lines
- Close to Central Brixton

Council tax band D      EPC rating B (84)





# Brixton Road

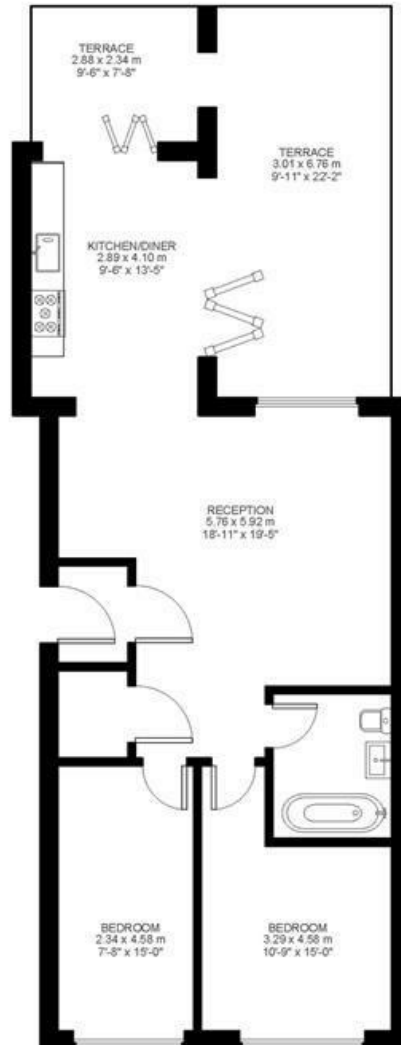


## 2 Bed flat

Approx internal area:

**804 sqft 75 sqm**

While we do try our very best, floor plans are produced as a guide only and we take no responsibility for the precise accuracy with which any property is represented



Second Floor





Brixton Road, Brixton, SW9

