



**Morrish Road, Brixton, SW2**

1 bedroom flat - conversion for sale

**£285,000**

Leasehold

## Property Details

A bright one double bedroom flat within a Victorian terrace on the well-located Morrish Road with a local pub and large brand supermarket within a couple of minutes' stroll. Lovingly cared for by the current vendor the home has been completely refurbished during the time of ownership, with a considered layout maximising the space on offer, resulting in a bright, airy home. Set to the top floor the flat benefits from additional light and privacy. Comfortable yet cosy the open plan reception is bathed in natural light from large windows and lightwell. Tucked neatly to one side the sleek kitchen is ergonomically designed, with integrated appliances and worktops wrapping around to create a sociable breakfast bar. Neutrally presented, the bedroom is peacefully tucked to the rear, a spacious double with fitted wardrobes featuring an integrated full-length mirror and finished with carpets, a soothing space in which to unwind at the end of the day. The bathroom is modern, with a walk-in shower, storage and lighting features.

## Features

- One double bedroom
- Victorian conversion
- Well-presented throughout
- Neighbourly road with street party and book club
- Proximity to Brixton, Streatham Hill and Balham
- Swift transport links
- Brixton a fifteen-minute walk or five-minute bus
- Streatham Hill an eight-minute walk
- Chain-free

Council tax band A    EPC rating E (40)

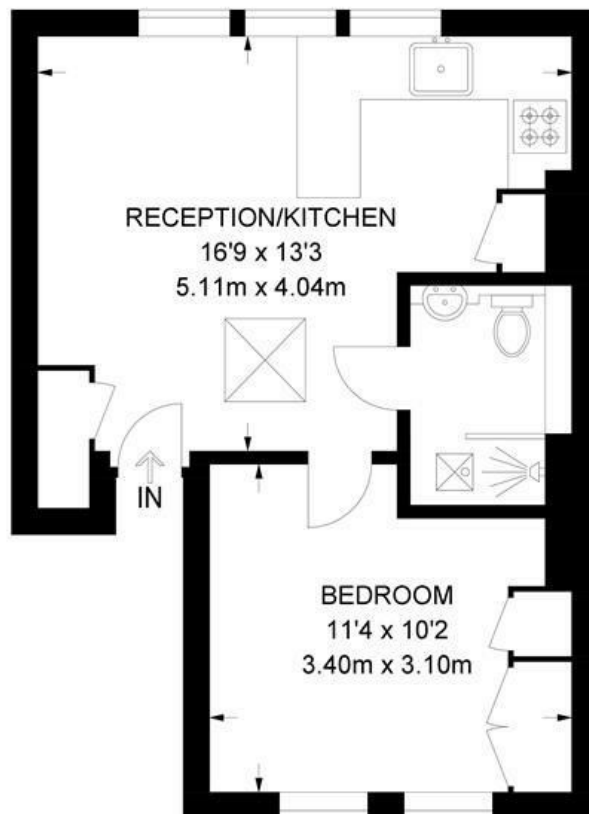




Morrish Road, Brixton, SW2

**Morrish Road, SW2**  
**1 Bedroom Flat**

APPROXIMATE GROSS INTERNAL AREA: **353 SQ FT / 33 SQ M**



**SECOND FLOOR**



While we try our very best, floor plans are produced as a guide only and we take no responsibility for the precise accuracy with which any property is represented.

Morrish Road, Brixton, SW2

