



**Poynders Road, Clapham South, SW4**

2 bedroom flat to let

**£357 Per Week**

Part furnished

## Property Details

A light and airy two double bedroom flat nestled securely on the second floor of a popular 1930's block. The location is ideal, a short walk from the amenities within both Clapham and Balham. Clapham South, with its multitude of restaurants, bars and coffee shops are all within reach and the green open spaces of Clapham Common are also close by, whilst thriving Balham is also within easy walking distance. There are excellent transport links with access to the Northern Line, National Rail links and numerous bus routes to central London. This is a great apartment - perfectly laid out and feels instantly livable, the moment you walk through the door. This bright and spacious property has a separate reception room, a modern galley kitchen and a contemporary bathroom. There is access to a South-facing, private balcony, perfect for the summer months. The master and second bedroom are both great size this property is ideal for a professional couple wanting to take advantage of what the area has to offer.

## Features

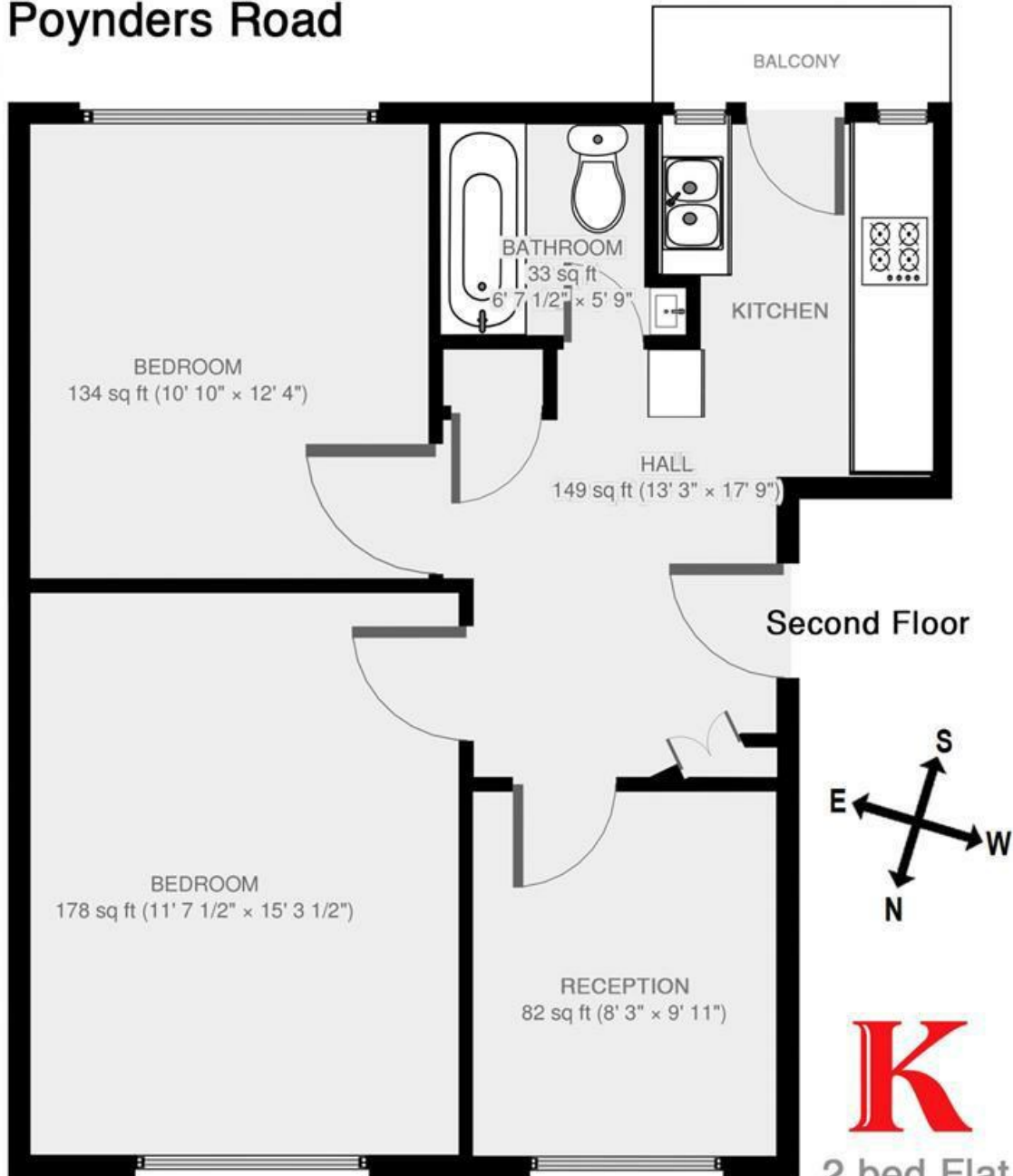
- Off-street parking
- Bright and airy throughout
- Close to transport links
- Close to clapham Common
- 2 Double Bedrooms

Council tax band A      EPC rating C (71)



Poynders Road, Clapham South, SW4

## Poynders Road



**2 bed Flat.**

Approx internal area:

**611 sqft 57 sqm**

While we do try our very best, floor plans are produced as a guide only and we take no responsibility for the precise accuracy with which any property is represented

Poynders Road, Clapham South, SW4

