



**Holmdene Avenue, London, SE24**

**£450,000**

2 bedroom flat for sale

## Property Details

A bright two double bedroom flat on the first floor of an imposing Victorian property within close proximity to Brockwell Park.

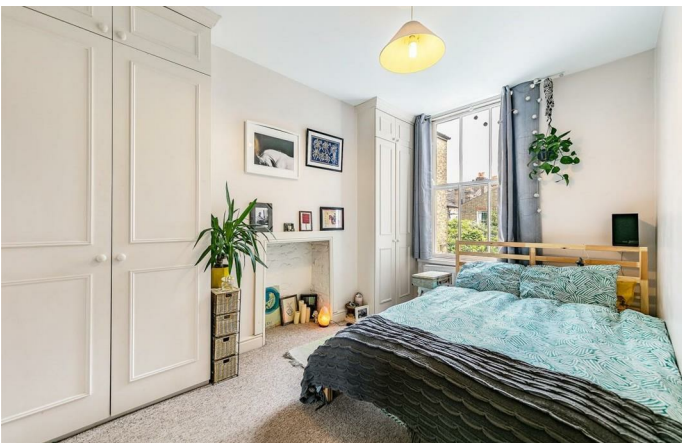
## Features

- Chain free
- Victorian
- Central location
- Bright and airy throughout
- Close to Brockwell Park

Council tax band C

EPC rating C (79)





Holmdene Avenue, London, SE24



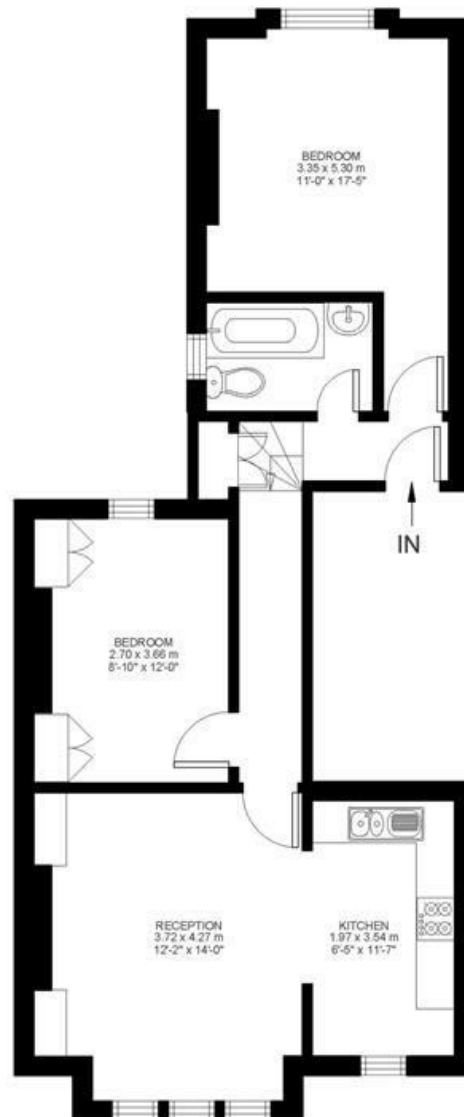
## 2 Bed flat

Approx internal area:

**635 sqft 59 sqm**

While we do try our very best, floor plans are produced as a guide only and we take no responsibility for the precise accuracy with which any property is represented

## Holmdene Avenue



First Floor





Holmdene Avenue, London, SE24

