



## Fortrose Gardens, SW2

2 bedroom flat to let

£381 Per Week

Furnished/unfurnished

### Property Details

A wonderful two double bedroom split level flat with balcony located within a short walk from Streatham Hill and bus ride away from Central Brixton. The flat comes complete with a spacious reception room that seamlessly flows out onto your own private balcony, a separate and spacious kitchen with plenty of work top space, family bathroom and two spacious double bedrooms. The property is a 12 minute walk to Streatham Hill, 10 minute bus trip to Clapham South or 10 minute bus trip to Brixton. Clapham and Brixton have a wide range of different bars, pubs, restaurants and transport links so you'll never go short of choice.

### Features

- Two double bedrooms
- Split level
- Spacious reception room
- Private Balcony
- Spacious
- Close to Transport links

Council tax band B    EPC rating D (67)

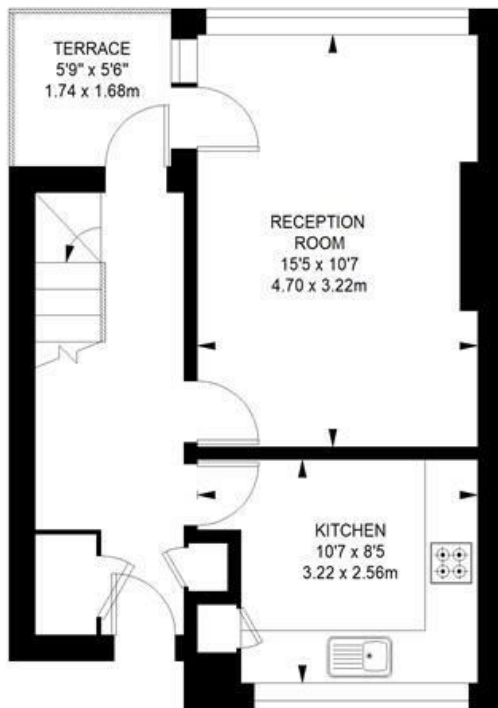


**Fortrose Gardens, SW2**

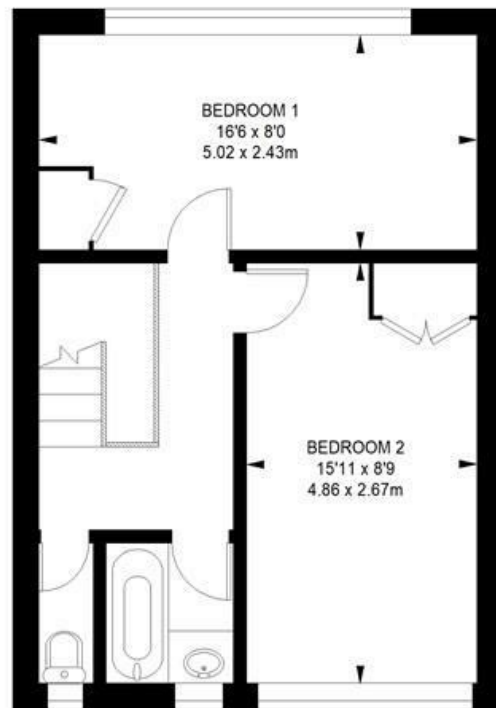
**2 bedroom flat**

APPROXIMATE GROSS INTERNAL AREA

**752 SQ FT / 69.86 SQ M**



**FIRST FLOOR**



**SECOND FLOOR**



While we try our very best, floor plans are produced as a guide only and we take no responsibility for the precise accuracy with which any property is represented.



Fortrose Gardens, SW2

