



Beechdale Road, Brixton, SW2

2 bedroom flat - conversion to let

£403 Per Week

Furnished

Property Details

Keating Estates are proud to present to market a striking two double bedroom flat set on the first floor of an attractive Victorian converted house on the desirable Beechdale Road. This delightful property is quietly located a short walk from the heart of Brixton, within a popular residential pocket close to Brockwell Park and the amenities of vibrant and trendy Brixton Hill.

Set to the front of the property, the reception forms a light and airy heart of the home, with large sash windows and dimensions to lounge and dine, this appealing room is stylishly finished and ideal for hosting or unwinding in front of the feature fireplace. A characterful archway leads through to the separate kitchen which offers ample storage within neutral wooden style cabinetry, the ideal kitchen in which to cook up a tasty treat.

Set peacefully to the rear of the property relishing views of the neighbouring gardens below, both bedrooms are doubles with the same tasteful décor as the rest of this beautiful home. The principal bedroom benefits from dual-aspect windows and built in wardrobes whilst the second bedroom is also spacious and Of further appeal for sharers, the bedrooms are set apart from one another for an added level of privacy. The bathroom is pristine, equipped with a bathtub plus overhead rain shower, finished to a high standard with storage and a heated towel rail.

Features

- Two double bedrooms
- Victorian conversion
- Well-presented
- Quiet, friendly residential street
- Local amenities of Brixton Hill
- Brockwell Park an eight-minute stroll
- Brixton and Herne Hill both a short walk away

Council tax band C EPC rating C (70)



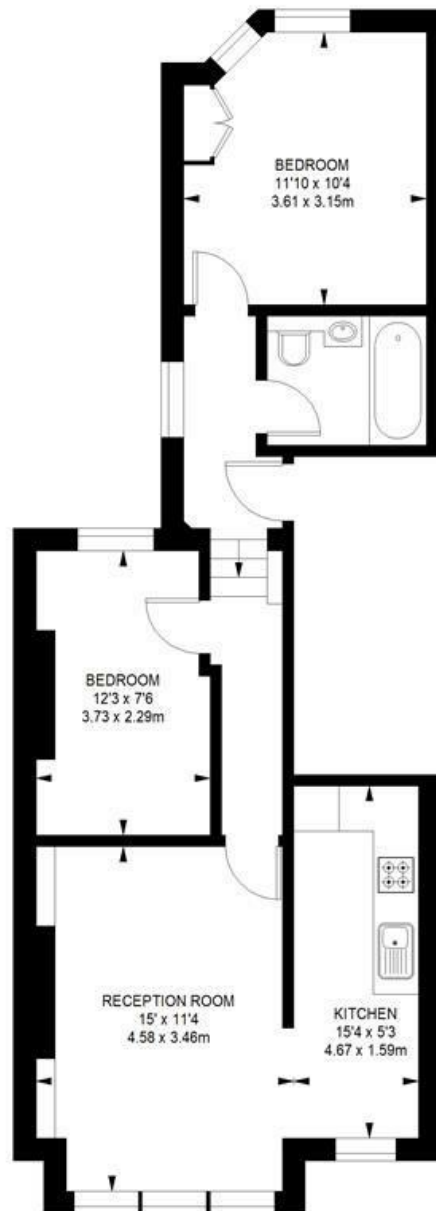
Beechdale Road, Brixton, SW2

Beechdale Road, SW2

2 bedroom flat

APPROXIMATE GROSS INTERNAL AREA:

584 SQ FT / 54.25 SQ M



FIRST FLOOR



While we try our very best, floor plans are produced as a guide only and we take no responsibility for the precise accuracy with which any property is represented.

Beechdale Road, Brixton, SW2

