

Brixton Hill, Brixton, SW2

2 bedroom flat - purpose built for sale

£365,000

Leasehold

Property Details

An appealing two double bedroom apartment with a private terrace in a popular Art Deco building, within secure, gated grounds. This flat has a desirable position, tucked away from the bustle of Brixton Hill. Recently refreshed, the home is a blank canvas, ready to move into and style to taste. Characterful wooden flooring adds to the ambience. The inviting reception is bright and airy, with space for a lounge plus a dining table. Flooded with natural light through large windows and a French door leading to the private terrace, the perfect spot in which to relax or drink in the sunset skies, overlooking the courtyard below. The kitchen is well-presented, with contemporary cabinets and sink set below the window. Both double bedrooms are to the opposing side of the home, away from the social spaces. The bathroom has a shower over bathtub, with under sink storage. There is a storage cupboard in the hallway and the vendor is fitting a brand new front door to this turn-key apartment. The building has a lift and there is off-street parking upon request for a small annual fee within the gated grounds. *Property has been virtually staged *

Council tax band B EPC rating C (75)

Features

- Two double bedrooms
- Private terrace
- Popular Art Deco gated building
- Parking available on application
- Tucked away quietly in the development
- Bright and airy atmosphere throughout
- Brixton tube station a fifteen-minute stroll
- Local amenities on the doorstep
- Lift access
- Chain-free

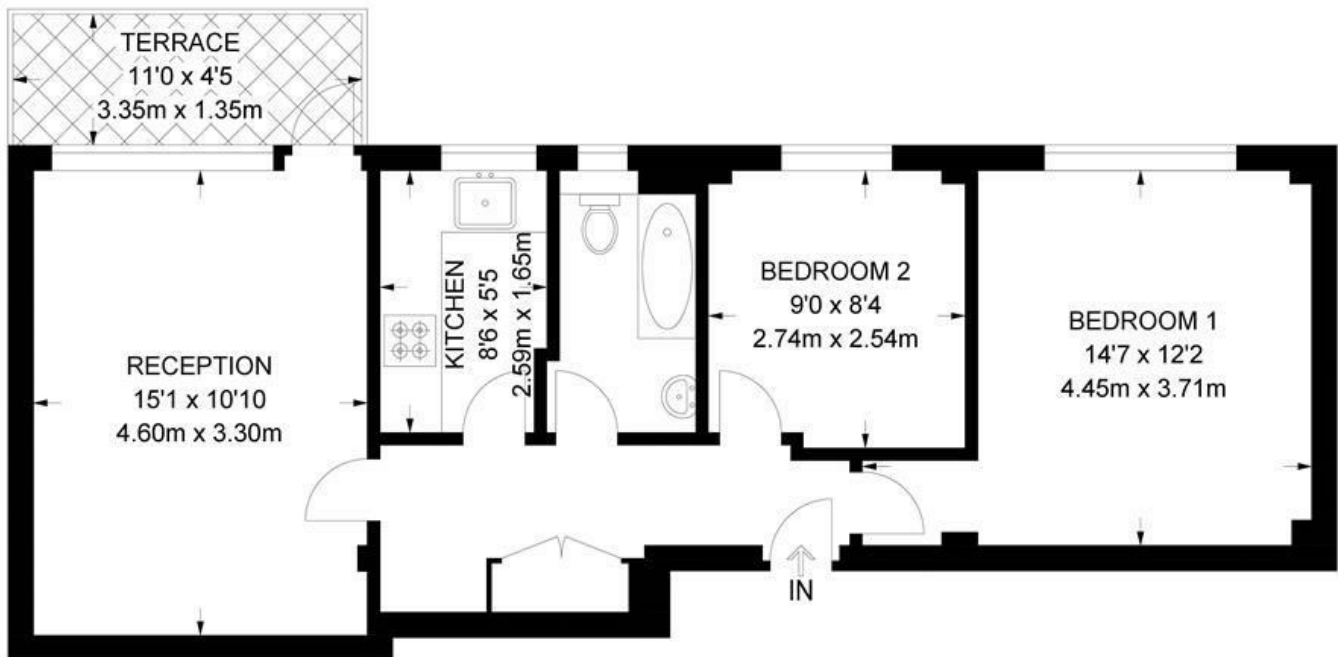


Brixton Hill, Brixton, SW2

Dumbarton Court, SW2

2 Bedroom Flat

APPROXIMATE GROSS INTERNAL AREA: 556 SQ FT / 51.6 SQ M



SECOND FLOOR



While we try our very best, floor plans are produced as a guide only and we take no responsibility for the precise accuracy with which any property is represented.

Brixton Hill, Brixton, SW2

