

Bellefields Road, Brixton, SW9

1 bedroom flat - purpose built to let

£403 Per Week

Furnished

Property Details

Keating Estates are proud to present stunning one double bedroom flat set in this secure modern development perfectly located in the heart of Brixton.

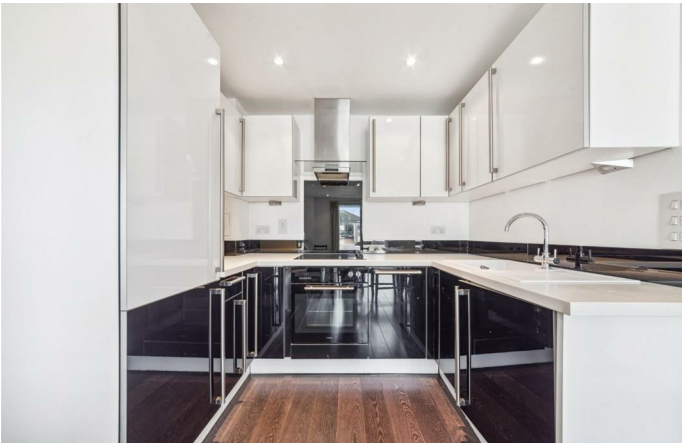
There is a spacious open plan living area, with engineered wood flooring, offering ample space to relax and dine. The kitchen has all you need in terms of mod cons and has plenty of work top space. The bedroom is of good size and the contemporary bathroom is beautifully finished. The whole property is flooded with natural light, engineered throughout for a sense of space and luxury.

Bellefields Road is a quiet residential street within the sought-after triangle of Brixton, Stockwell and Clapham. The location is perfect and the property is situated right in the heart of Brixton's cultural hub – a three-minute stroll to Brixton tube station, just around the corner from Windrush Square, Brixton Village, The Ritzy and POP Brixton, this street seems a world away. This flat is perfect for anyone who wants to be close to the action but would prefer to retain a sense of calm. The green open spaces of Brockwell Park are close-by and within a ten to twelve-minute walk, you have all that Clapham has to offer, with transport links that include Clapham High Street station and Clapham North tube station. Stockwell is a ten-minute walk with access to both Northern and Victoria tube lines.

Council tax band C **EPC rating B (85)**

Features

- One Bedroom
- Open Plan
- Modern
- Secure Development
- Close to Town Centre
- Close to Transport Links

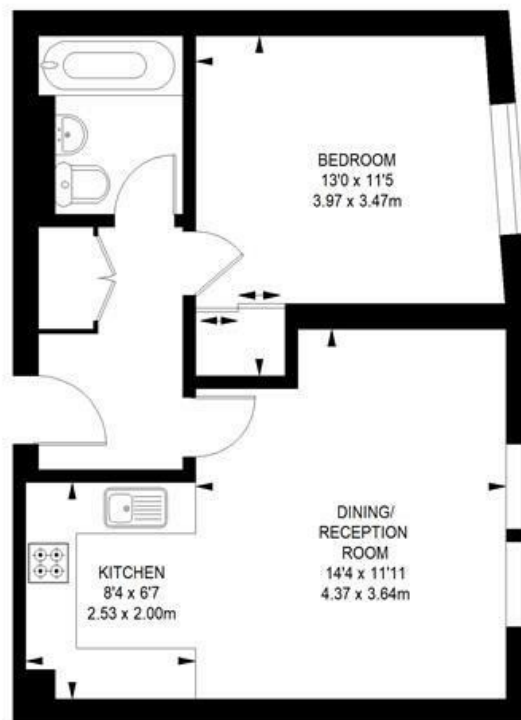


Bellefields Road, Brixton SW9

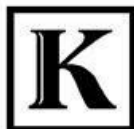
1 bedroom flat

APPROXIMATE GROSS INTERNAL AREA WITHOUT STORAGE:

462 SQ FT / 42.92 SQ M



SECOND FLOOR



While we try our very best, floor plans are produced as a guide only and we take no responsibility for the precise accuracy with which any property is represented.

Bellefields Road, Brixton, SW9

