



Acre Lane, Brixton, SW2

1 bedroom flat for sale

£514,500

Leasehold

Property Details

A stunning one bedroom apartment with a private terrace, in a striking Art-Deco style modern building with high-quality fixtures and fittings. This secure flat boasts an appealing open-plan reception creating a great entertaining space, with parquet flooring and a sleek integrated kitchen with ample storage. The living area is spacious with room for a dining table. The fantastic terrace can be savoured all year around, a Southerly suntrap in the summer, benefitting from being partially covered for cosying up whilst protected from the elements. The generous double bedroom is peaceful with built-in wardrobes. There is further storage next to the flat entrance. The bathroom is luxurious with feature lighting, bath and shower overhead. Benefitting from a favourable position within the building, this particular home is at the rear, quietly facing away from Acre Lane, set on the first floor, with fantastic insulation and double glazed windows for high energy efficiency. This sought-after development has just twenty-six privately owned apartments, beautiful communal areas, a lift and bike storage.

Features

- One double bedroom
- South Facing private terrace
- Secure modern build in Art-Deco style
- Quiet position within the building
- High-end finishes
- Build warranty
- Lift and bike storage
- Central location in Brixton
- Victoria and Northern Lines

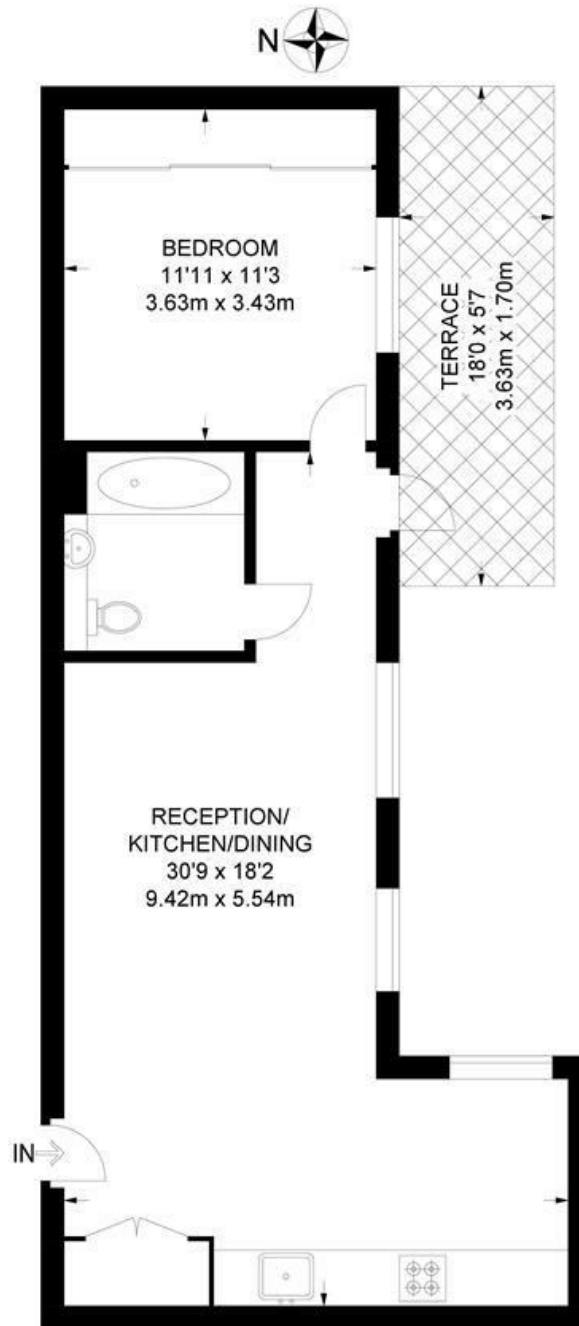
Council tax band C EPC rating C (80)



Acre Lane, Brixton, SW2

Ivor House, SW2
1 Bedroom Flat

APPROXIMATE GROSS INTERNAL AREA: **542 SQ FT / 50.3 SQ M**



FIRST FLOOR



While we try our very best, floor plans are produced as a guide only and we take no responsibility for the precise accuracy with which any property is represented.

Acre Lane, Brixton, SW2

