

Villa Road, Brixton, SW9

2 bedroom flat - conversion for sale

£600,000

Share of Freehold

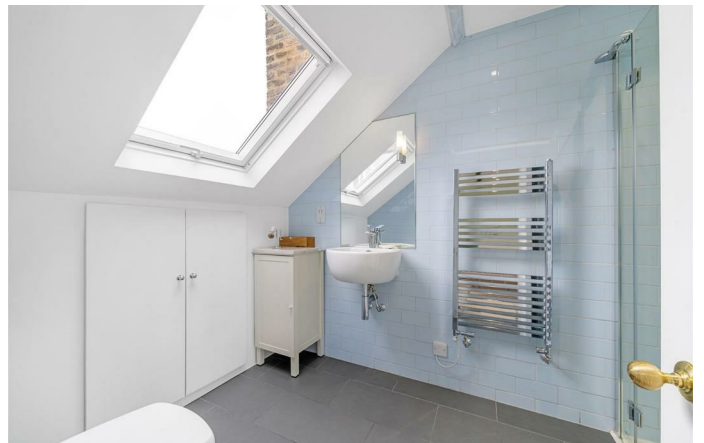
Property Details

A fantastic two bedroom, two bathroom flat in a Victorian terrace overlooking the park. The apartment has undergone a high-specification refurbishment, split over the upper floors, it is private and bright. The generous open-plan reception boasts wooden flooring and dual aspect windows relishing unobstructed views of the park. The kitchen is integrated with shaker cabinetry and quartz worktops and room for a dining table. Both bedrooms are doubles, set to differing floors of the home for a level of privacy. The principle bedroom is particularly large, with built-in wardrobes and an en-suite. Still a genuine double, the second bedroom is currently utilised as a home office and guest room yet easily repurposed to suit needs. The main bathroom is conveniently located to serve the first bedroom, with a walk-in shower and a separate bath below the window. Both bathrooms have underfloor heating.

Council tax band C EPC rating (null)

Features

- Two double bedrooms
- Two bathrooms
- Victorian conversion
- Split over two floors
- Overlooking the park
- Brixton station in seven minutes
- Close to the amenities of Brixton, Stockwell and Loughborough Junction
- Share of Freehold
- Chain-free



Villa Road, Brixton, SW9

Villa Road, SW9
2 Bedroom Flat

APPROXIMATE GROSS INTERNAL AREA WITH EAVES: **947 SQ FT / 88 SQ M**
APPROXIMATE GROSS INTERNAL AREA WITHOUT EAVES: **845 SQ FT / 78.5 SQ M**



While we try our very best, floor plans are produced as a guide only and we take no responsibility for the precise accuracy with which any property is represented.

Villa Road, Brixton, SW9

