

**Saltoun Road, Brixton, SW2**

2 bedroom flat - conversion to let

£461 Per Week

Furnished

Property Details

A charming two double bedroom flat situated on a beautiful Victorian terraced street, located in the heart of Brixton. The flat comprises a large open plan living area and kitchen with gorgeous bay windows and a feature fireplace. The two double bedrooms are towards the back of the property both spacious and full of light. The property is located just a short walk from lively Brixton high street and just under a seven minute walk from Brixton Underground, you'll also be a short stroll to Brockwell Park - you really do get the best of both worlds with this property.

Council tax band C EPC rating D (66)

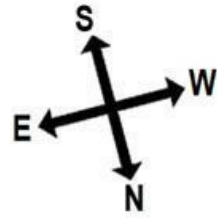
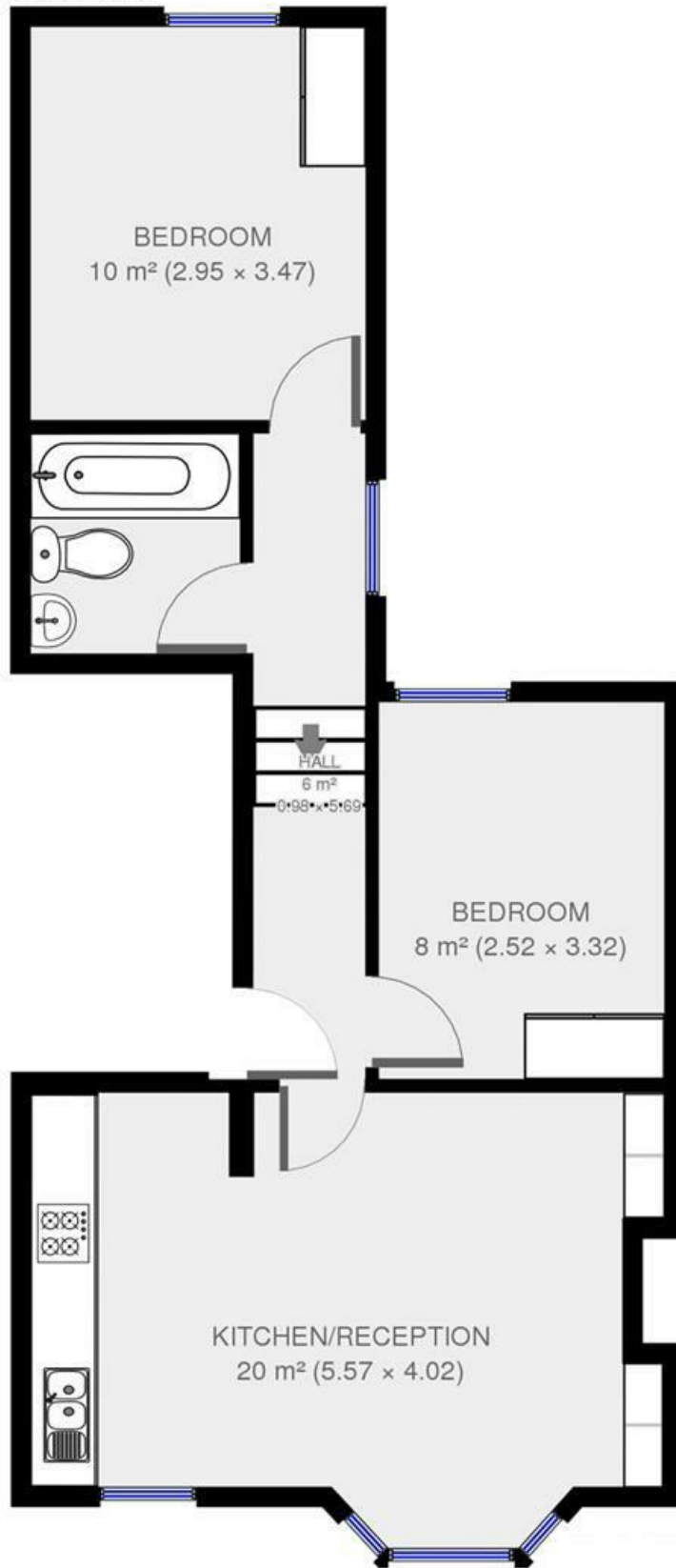
Features

- Victorian
- Conversion Flat
- 2 Double Bedrooms
- Under a five minute walk to Brixton Underground
- Open plan kitchen / reception
- Within walking distance to Brockwell Park
- Light and airy throughout



Saltoun Road, Brixton, SW2

First Floor



2 bed flat.
Approx internal area:

538 sqft 50 sqm

While we do try our very best, floor plans are produced as a guide only and we take no responsibility for the precise accuracy with which any property is represented

Saltoun Road

Saltoun Road, Brixton, SW2

