

Brixton Water Lane, Brixton, SW2

2 bedroom flat - purpose built for sale

£585,000

Leasehold

Property Details

A two double bedroom flat with a private South-facing terrace and a large communal roof terrace, set within in a luxury modern development in the heart of Brixton, a stone's throw from Brockwell Park. The open plan living space has an abundance of natural light through large South-facing windows, and generous proportions in which to unwind and dine. The contemporary kitchen offers sleek storage, integrating appliances. The comfortable lounge area flows seamlessly out to the private sun-trap terrace. Set to opposing sides of the home, both bedrooms are comfortable doubles with fitted wardrobes, large-pane windows on two sides, and cosy carpets. The principal bedroom enjoys a luxurious en-suite shower room. The main bathroom has a similar feel, with a high standard of fittings including a bathtub with overhead rain shower, ideal for a soak in the bubbles after a yoga class at the studio just downstairs. Underfloor heating plus high energy efficiency ensure lower energy bills. Further benefits of this neighbourly secure development include lift access and a large communal roof terrace with 360 degree views with the City in the distance.

Features

- Two double bedrooms
- Two bathrooms
- Private South-facing terrace
- Secure modern development
- Large communal roof terrace with 360 degree views
- Bright and airy
- Lift access
- Close to Brockwell Park and Lido
- Brixton Tube an eight-minute walk
- Herne Hill a ten-minute stroll

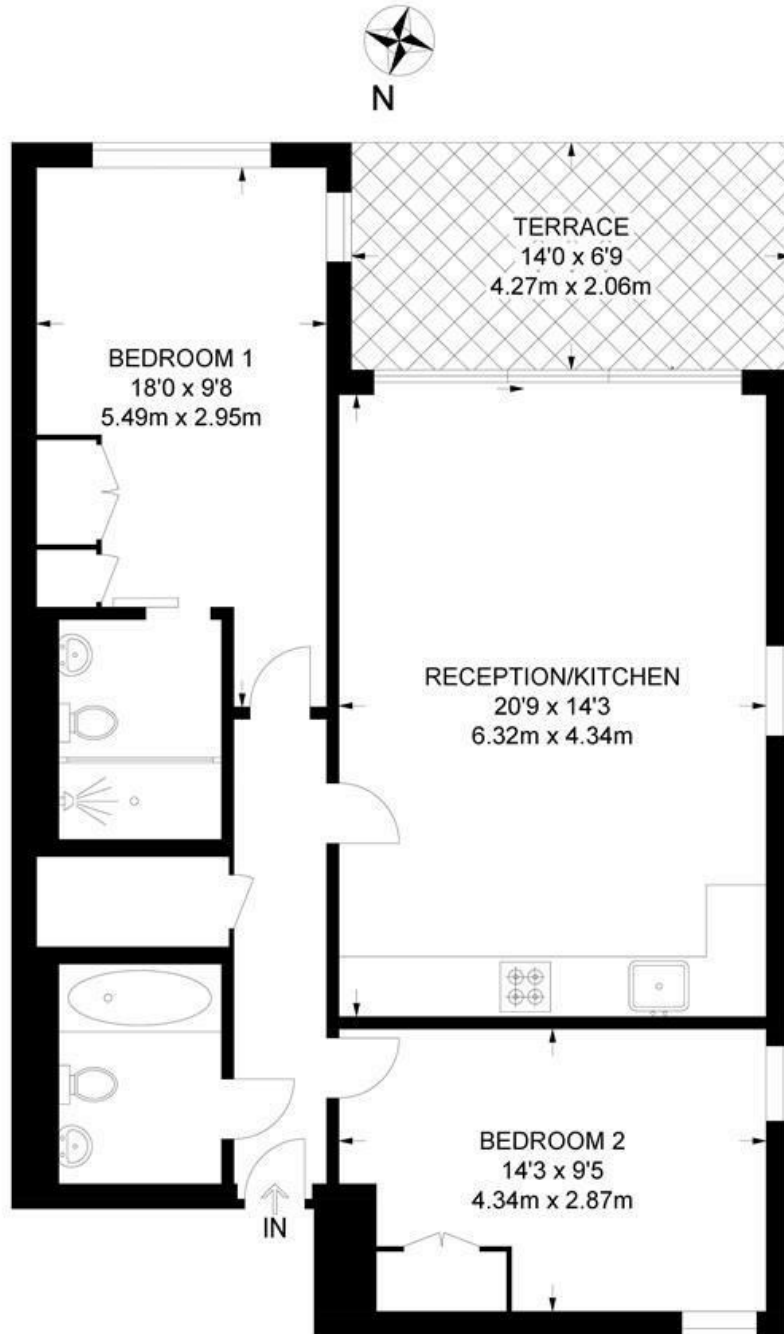
Council tax band D EPC rating B (83)



Brixton Water Lane, Brixton, SW2

Brixton Water Lane, SW2
2 Bedroom Flat

APPROXIMATE GROSS INTERNAL AREA: **775 SQ FT / 72 SQ M**



SECOND FLOOR



While we try our very best, floor plans are produced as a guide only and we take no responsibility for the precise accuracy with which any property is represented.

Brixton Water Lane, Brixton, SW2

